

INDUSTRIAL  
BUSINESS  
CITY LOT  
TOPOGRAPHIC MAPPING

# C. E. COULTER

LAND SURVEYOR

REGISTERED UNDER LAWS OF STATE OF MINNESOTA  
LICENSED BY ORDINANCE OF CITY OF MINNEAPOLIS

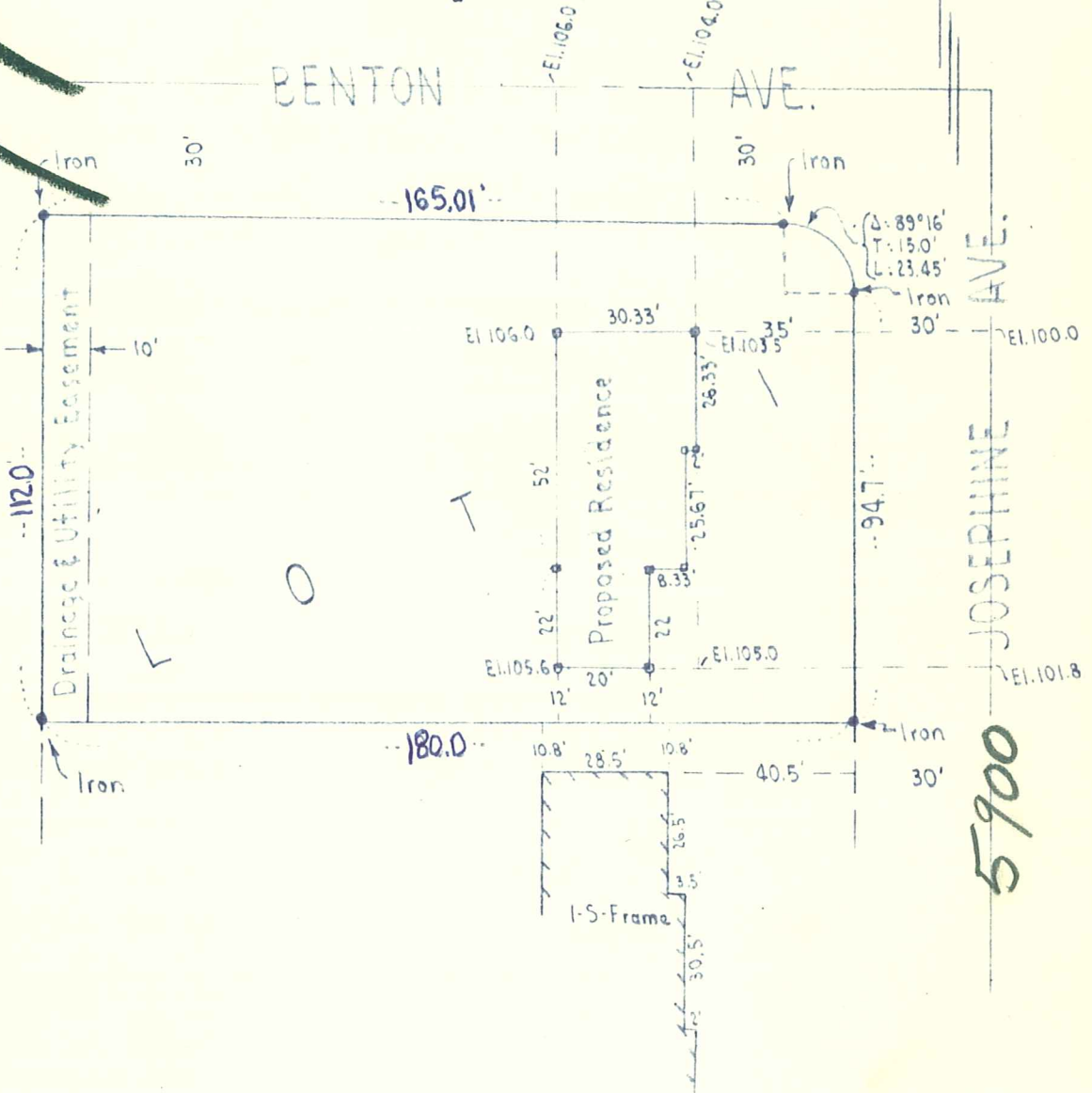
3300 LYNDALE AVE. SO. MINNEAPOLIS 8, MINN.  
LOCUST 0370

PLATTING  
FARM SURVEYS  
LAKESHORE  
JUDICIAL

SCALE: 1" = 40'

## Surveyor's Certificate

*1988*



5900 JOSEPHINE AVE.

I hereby certify that the above is a true and correct plat of a survey of:  
Lot One (1), Block One (1), SAGAR SQUARE, Hennepin County, Minnesota.  
As surveyed by me this 6th day of December 1956 A. D.

Signed C. E. Coulter  
Minnesota Registration No. 2584

33-117-21-31-0078  
5900 Josephine Ave