

INDUSTRIAL  
BUSINESS  
CITY LOTS  
TOPOGRAPHIC MAPPING

# C. E. COULTER

LAND SURVEYOR

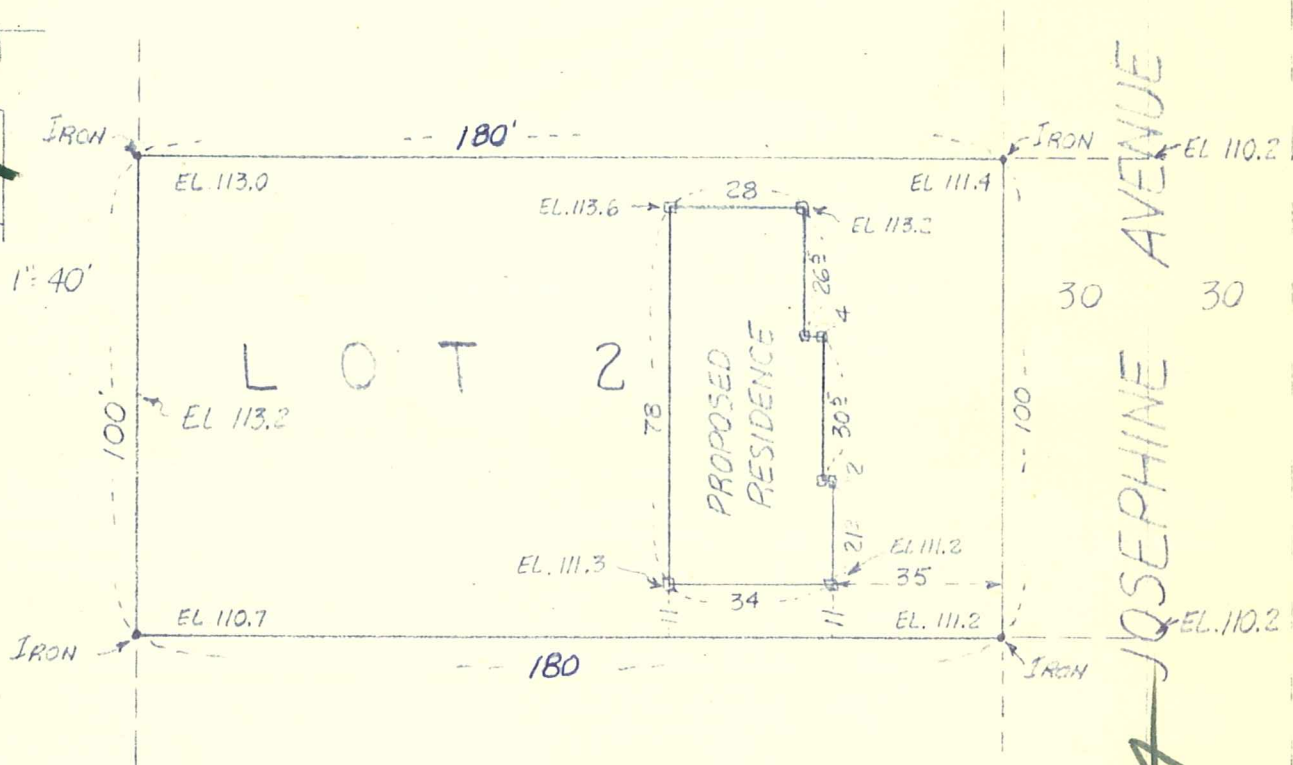
PLATTING  
FARM SURVEYS  
LAKE SHORE  
JUDICIAL

REGISTERED UNDER LAWS OF STATE OF MINNESOTA  
LICENSED BY ORDINANCE OF CITY OF MINNEAPOLIS  
3300 LYNDAL AVE. SO. MINNEAPOLIS 8, MINN.  
LOCUST 0370

## Surveyor's Certificate

7308

SCALE 1" = 40'



5904 JOSEPHINE AVENUE

I hereby certify that the above is a true and correct plat of a survey of:

Lot Two (2), Block One (1), SAGAR SQUARE, Hennepin County, Minnesota.

As surveyed by me this 15th day of March 1956 A. D.

Signed C. E. Coulter  
Minnesota Registration No. 2584

Dot 33-117-21-31-0079  
5904 Josephine Ave