

INDUSTRIAL
BUSINESS
LOTS
TOPOGRAPHIC MAPPING

C. E. COULTER

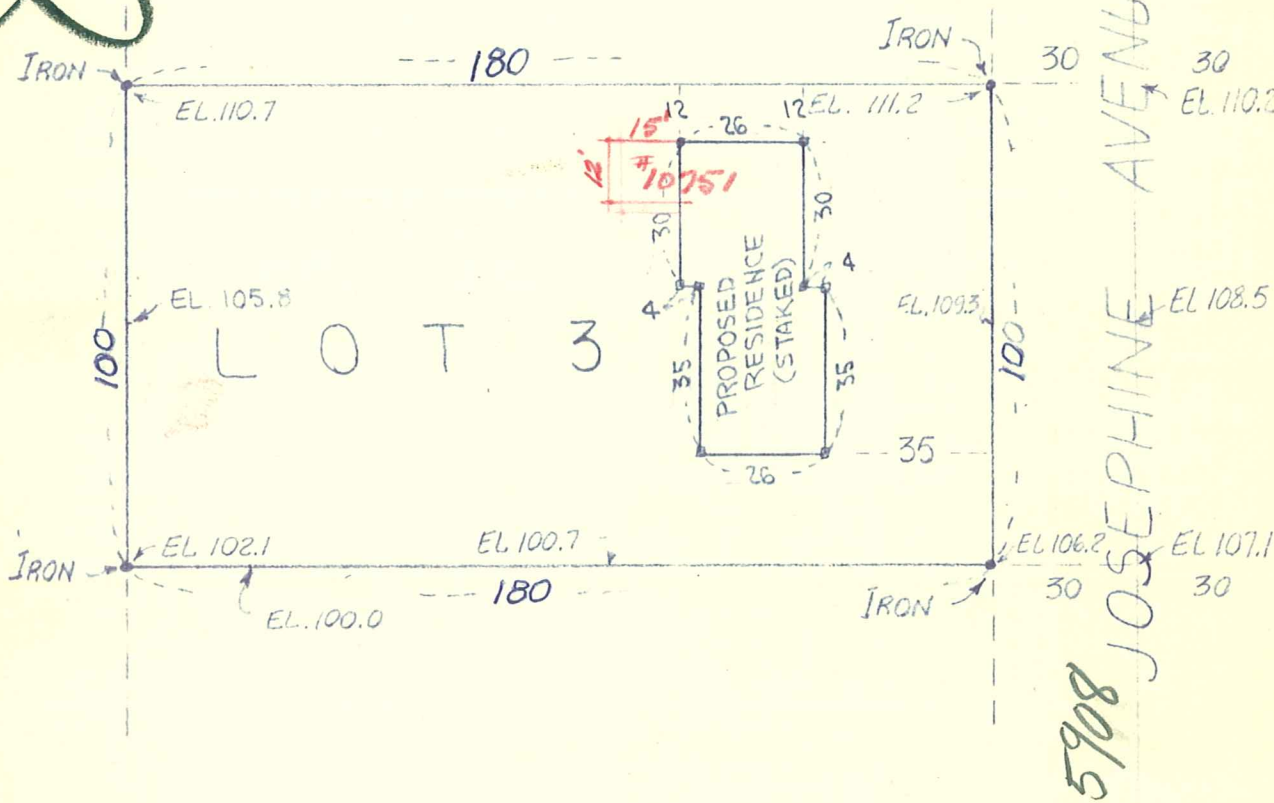
LAND SURVEYOR

PLATTING
FARM SURVEYS
LAKESHORE
JUDICIAL

REGISTERED UNDER LAWS OF STATE OF MINNESOTA
LICENSED BY ORDINANCE OF CITY OF MINNEAPOLIS
3300 LYNDALE AVE. SO. MINNEAPOLIS 8, MINN.
LOCUST 0370

Surveyor's Certificate

842



I hereby certify that the above is a true and correct plat of a survey of:
Lot Three (3), Block One (1), SAGAR SQUARE, Hennepin County, Minnesota.
As surveyed by me this 15th day of March 1956 A. D.

Signed C. E. Coulter
Minnesota Registration No. 2584

Re-staked house.

Signed C. E. Coulter
Minnesota Registration No. 2584

August 16, 1957 A.D.

OK
P. G. H.
Edlin
8/8/1960
33-117-21-31-0080
5908 Josephine Ave.