

INDUSTRIAL
BUSINESS
CITY LOT
TOPOGRAPHIC MAPS

C. E. COULTER

LAND SURVEYOR

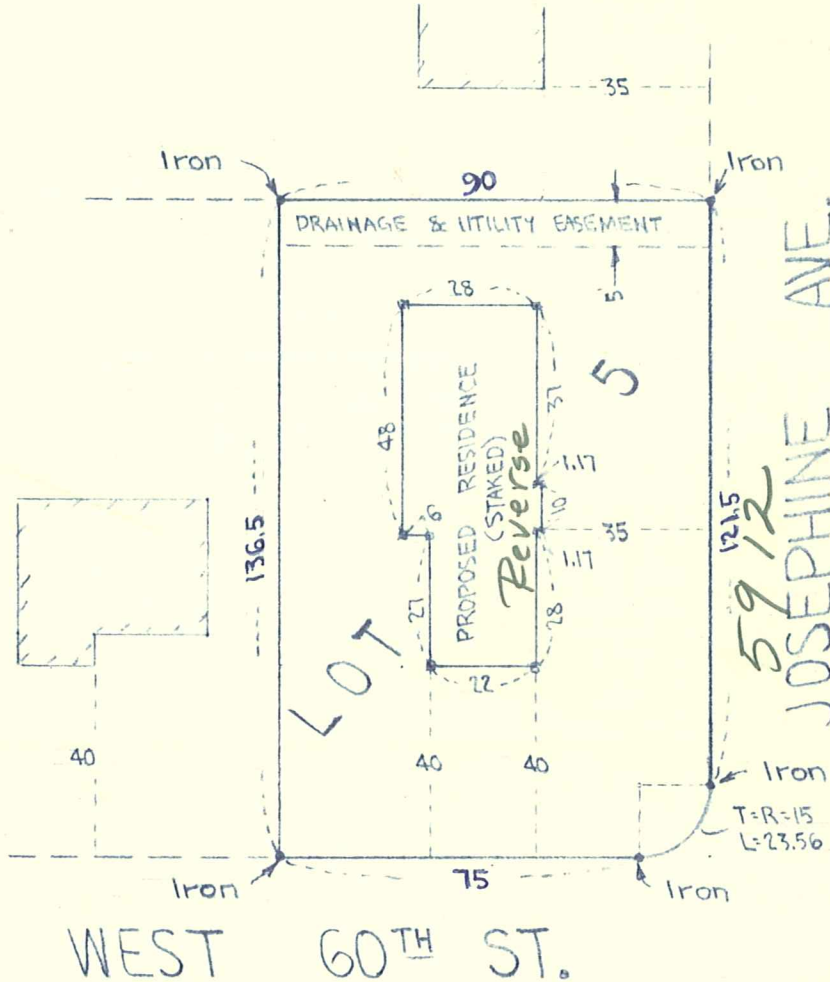
REGISTERED UNDER LAWS OF STATE OF MINNESOTA
LICENSED BY ORDINANCE OF CITY OF MINNEAPOLIS

3300 LYNDAL AVE. SO. MINNEAPOLIS 8, MINN.
TAYLOR 4-0370

PLATTING
FARM SURVEYS
LAKESHORE
JUDICIAL

8502

Surveyor's Certificate



I hereby certify that the above is a true and correct plat of a survey of:

Lot Five (5), Block One (1), SAGAR SQUARE, Hennepin County, Minnesota.

As surveyed by me this 19th day of September 1957 A.D.

Signed C. E. Coulter
Minnesota Registration No. 2584

33-117-21-31-0082
5912 Josephine Ave