

C. E. COULTER
LAND SURVEYOR

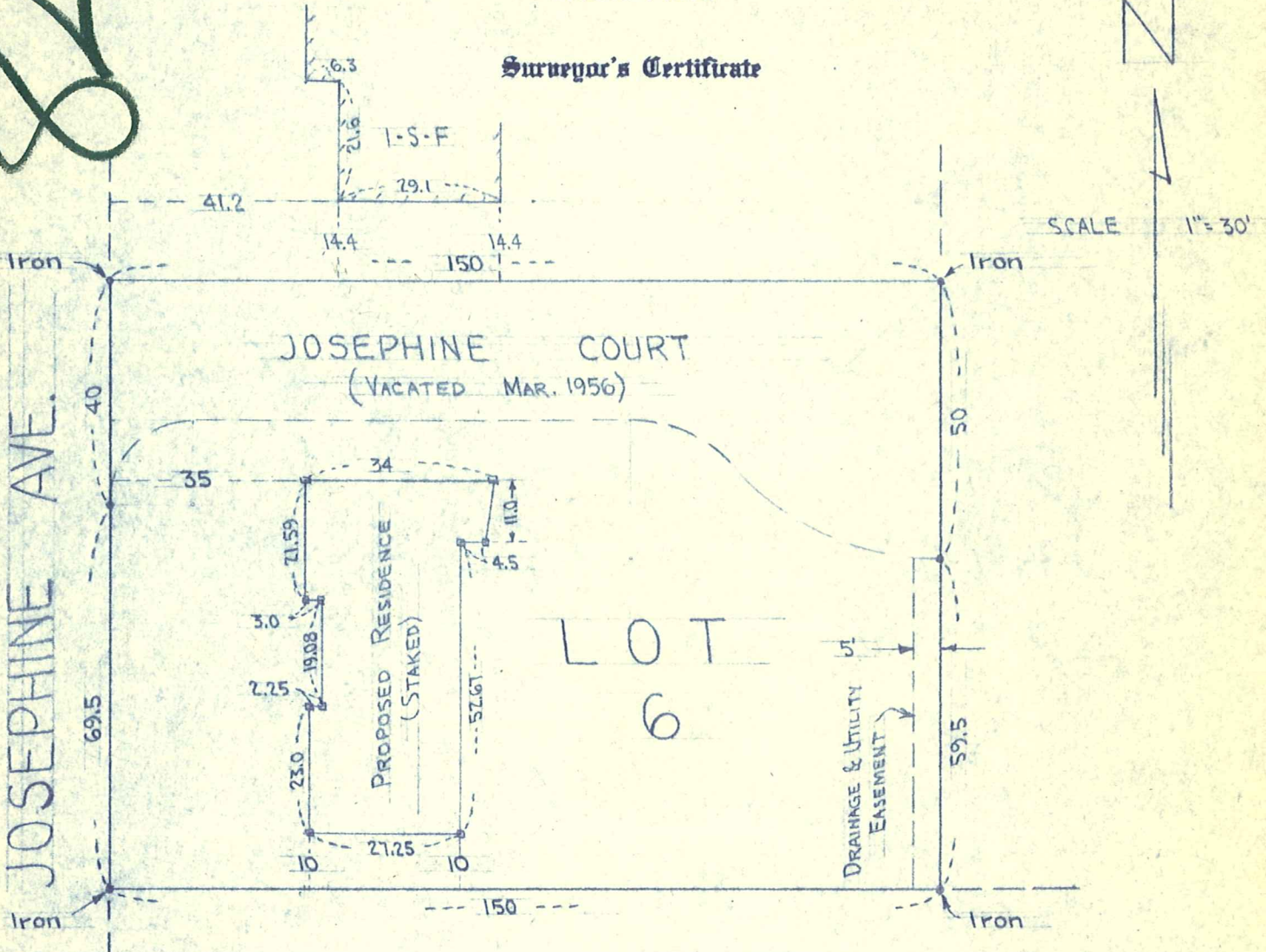
PLATTING
FARM SURVEYS
LAKESHORE
JUDICIAL

REGISTERED UNDER LAWS OF STATE OF MINNESOTA
LICENSED BY ORDINANCE OF CITY OF MINNEAPOLIS
3300 LYNDALE AVE. SO. MINNEAPOLIS 8, MINN.
TAYLOR 4-0370

INDUSTRIAL
BUSINESS
CITY LOTS
TOPOGRAPHIC MAPPING

8278

Surveyor's Certificate



5909

I hereby certify that the above is a true and correct plat of a survey of:

Lot Six (6), Block Two (2), SAGAR SQUARE, Hennepin County, Minnesota.

As surveyed by me this 5th day of June, 1957, A.D.

Signed C. E. Coulter
Minnesota Registration No. 2584

33-117-21-31-0085
5909 Josephine Ave.