

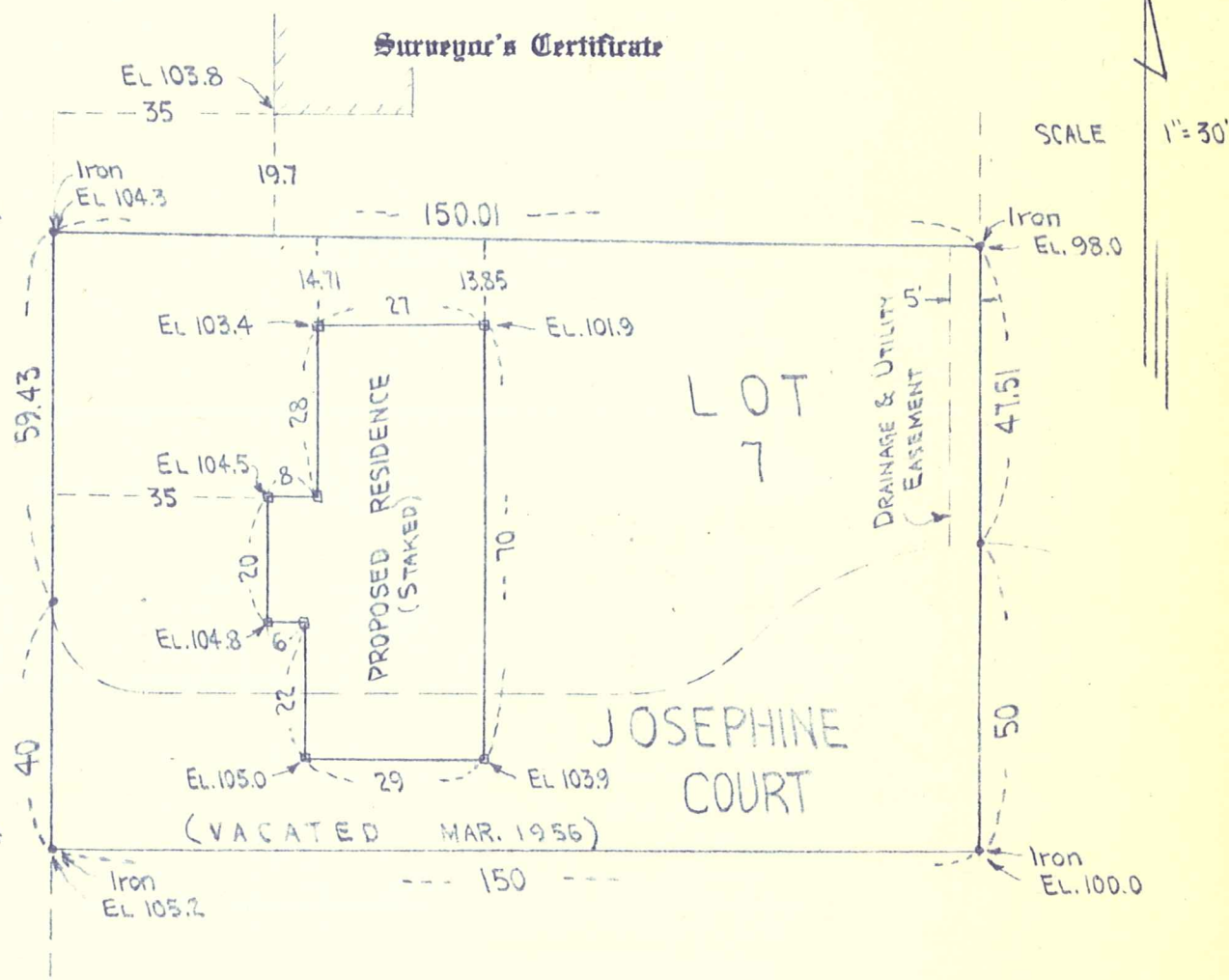
# C. E. COULTER

LAND SURVEYOR

PLATTING  
FARM SURVEYS  
LAKESHORE  
JUDICIAL

REGISTERED UNDER LAWS OF STATE OF MINNESOTA  
LICENSED BY ORDINANCE OF CITY OF MINNEAPOLIS  
3300 LYNDALE AVE. SO. MINNEAPOLIS 8, MINN.  
TAYLOR 4-0370

5905 JOSEPHINE AVE. 8084



I hereby certify that the above is a true and correct plat of a survey of:  
 Lot Seven (7), together with that part of the adjoining North One-half (N 1/2) of vacated Josephine Court lying between extensions across it of the East and West lines of Lot Seven (7), in Block Two (2), SAGAR SQUARE, Hennepin County, Minnesota.

As surveyed by me this 12th day of March 1957 A. D.

Signed C. E. Coulter  
 Minnesota Registration No. 2584

33-117-21-31-0086  
 5905 Josephine Ave.