

INDUSTRIAL
BUSINESS
CITY LOTS
TOPOGRAPHIC MAPPING

C. E. COULTER LAND SURVEYOR

PLATTING
FARM SURVEYS
LAKESHORE
JUDICIAL

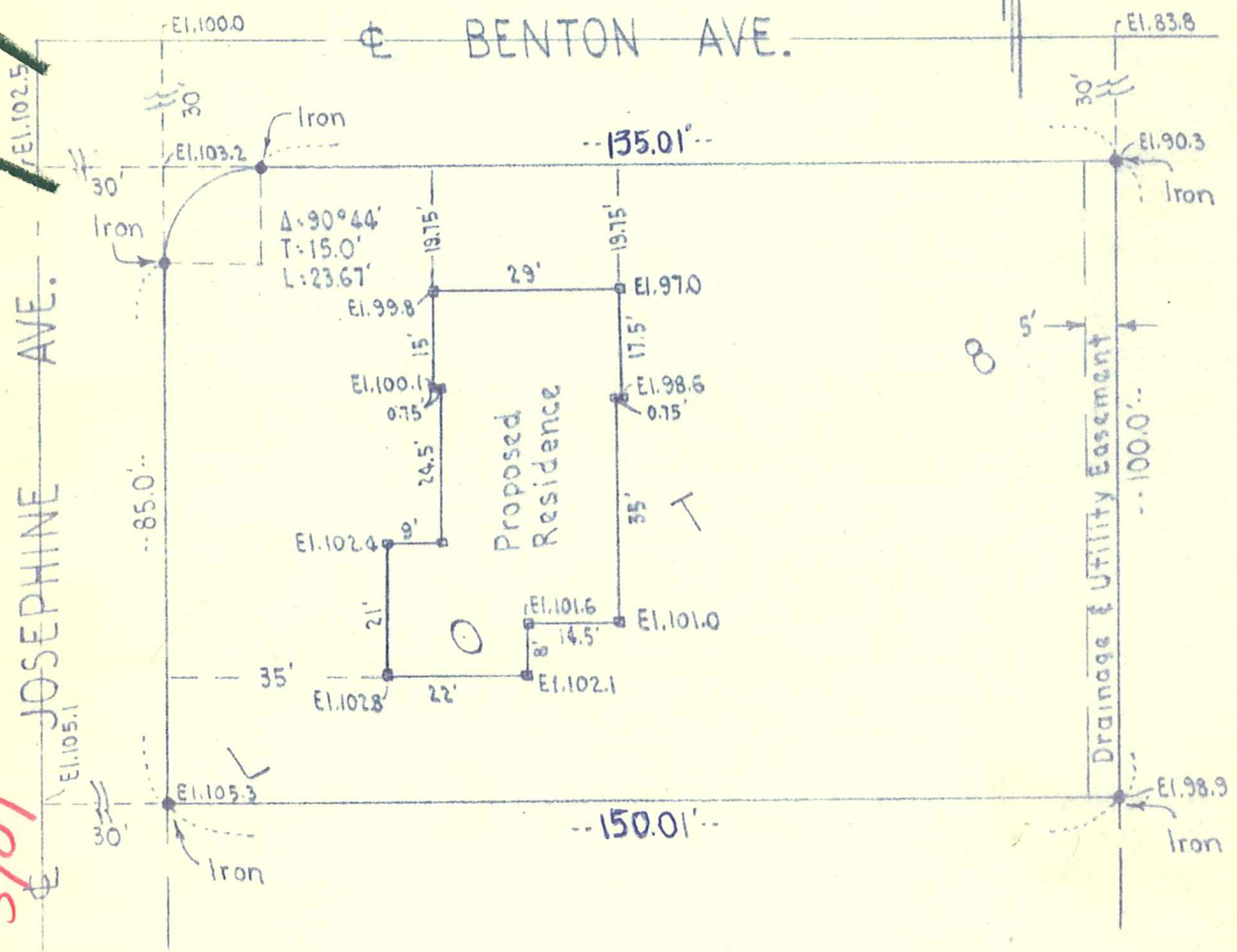
REGISTERED UNDER LAWS OF STATE OF MINNESOTA
LICENSED BY ORDINANCE OF CITY OF MINNEAPOLIS
3300 LYNDALE AVE. SO. MINNEAPOLIS 8, MINN.
LOCUST 0370

SCALE: 1"=30'

Surveyor's Certificate

7951

5901



I hereby certify that the above is a true and correct plat of a survey of:
 Lot Eight (8), Block Two (2), SAGAR SQUARE, Hennepin County, Minnesota.
 As surveyed by me this 19th day of November 1956 A.D.

Signed C. E. Coulter
 Minnesota Registration No. 2584

33-117-21-31-0087
 5901 Josephine Ave.