

INDUSTRIAL
BUSINESS
CITY LOTS
TOPOGRAPHIC MAPPING

C. E. COULTER LAND SURVEYOR

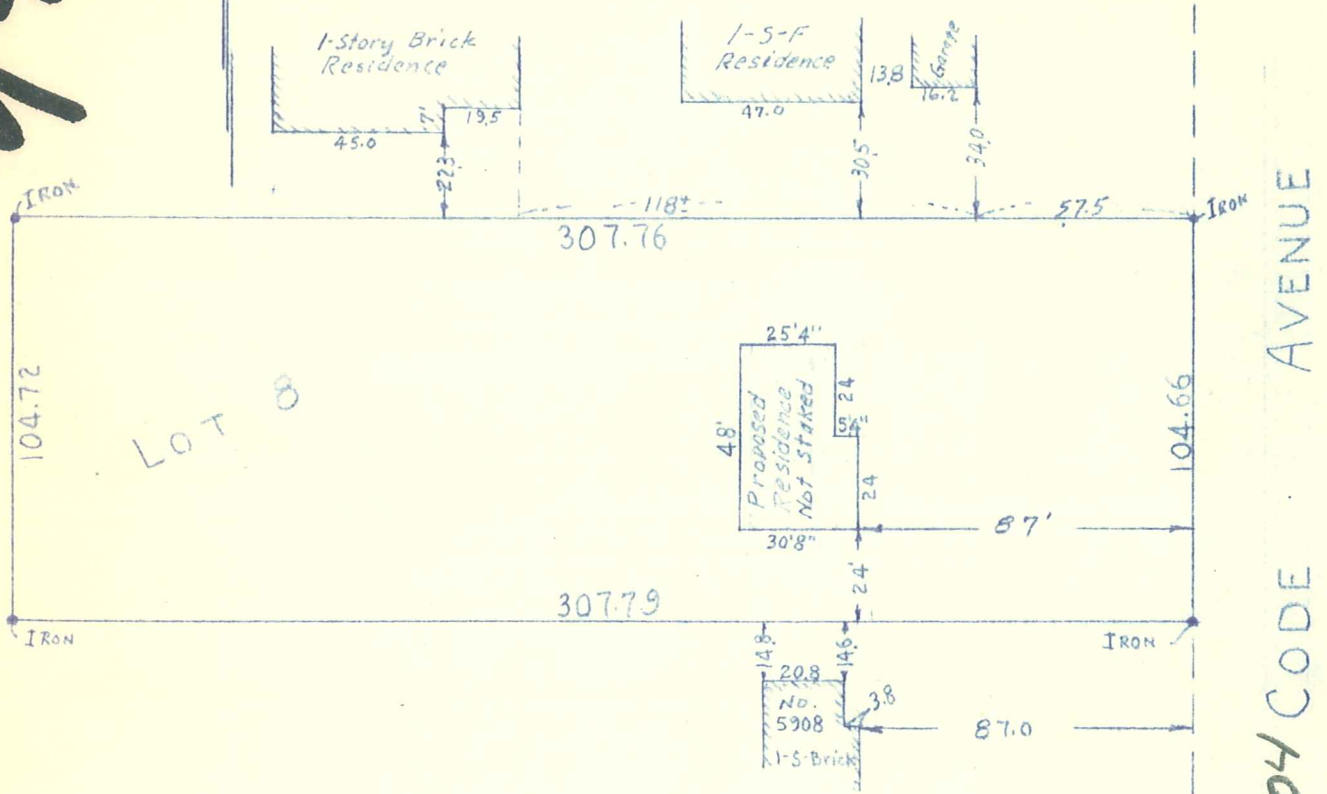
PLATTING
FARM SURVEYS
LAKESHORE
JUDICIAL

REGISTERED UNDER LAWS OF STATE OF MINNESOTA
LICENSED BY ORDINANCE OF CITY OF MINNEAPOLIS
3300 LYNDALE AVE. SO. MINNEAPOLIS 8, MINN.
TAYLOR 4-0370

Surveyor's Certificate

9444
5452

Scale: 1"=50'



5904 CODE AVENUE

I hereby certify that the above is a true and correct plat of a survey of:
Lot Eight (8), Block One (1), "Codes Highview Park", Edina, Minnesota.
As surveyed by me this 25th day of November 1958 A.D.

Signed C. E. Coulter
Minnesota Registration No. 2584

5904 CODE AVE