

BUILDING DEPARTMENT
CITY LOT SURVEYING
PLATTING
FARM SURVEYING
AUG 24 2010
CITY OF EDINA

CONCEPT
APPROVED

222-55.

M. J. BERSCHIED

Architect and Engineer

PHONE PARKWAY 4-4593

3644 TWENTY-SECOND AVENUE SOUTH

Date 6-15-84

A.B.

City of Edina Bldg. Dept.

MINNEAPOLIS 7, MINN.
#5908

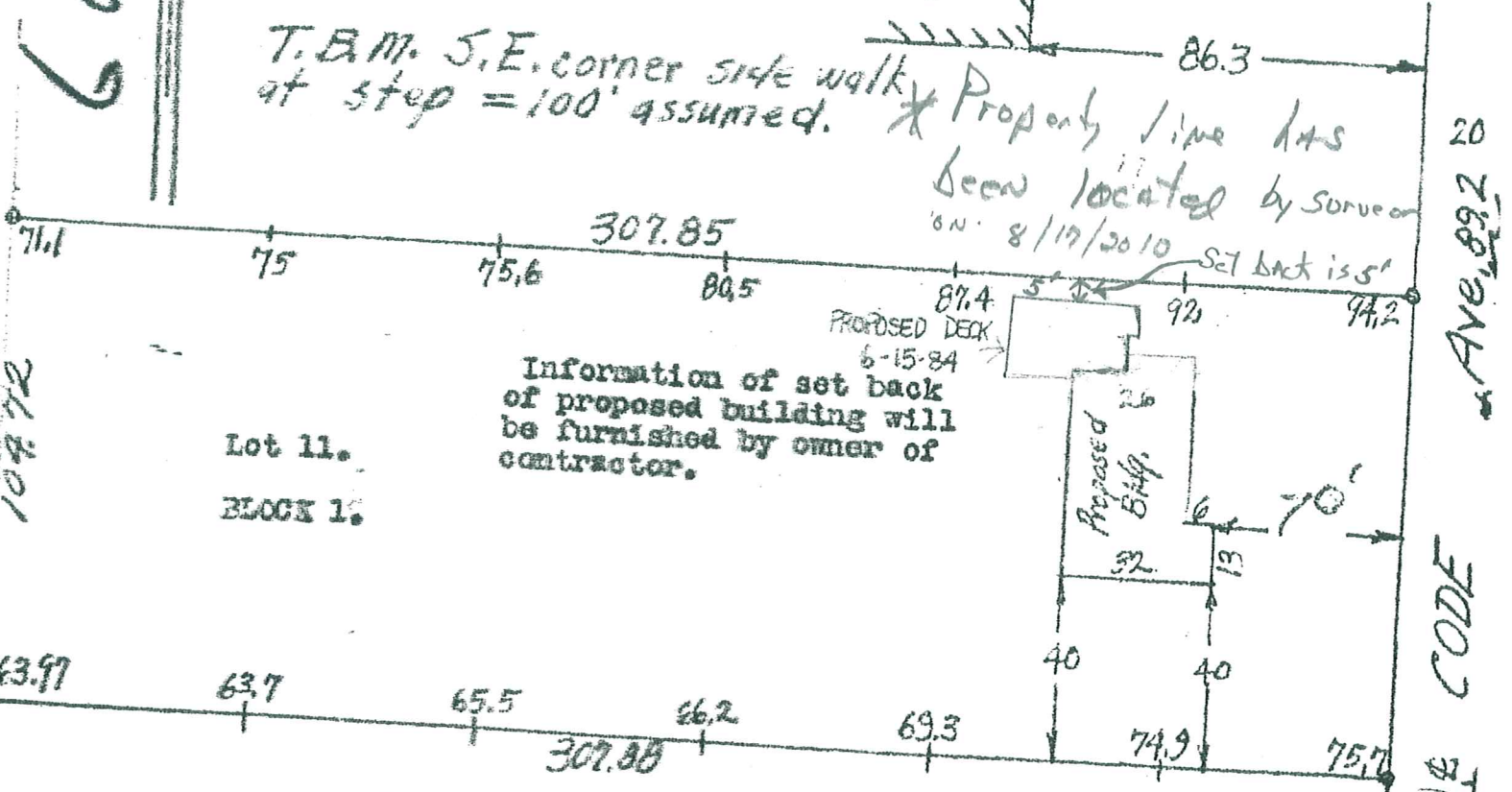
T.E.M. S.E. corner side walk
at step = 100' assumed.

* Property line has
been located by survey
on 8/19/2010 Set back is 5'

6844

10872

63.97



Information of set back
of proposed building will
be furnished by owner of
contractor.

Lot 11.

Block 1.

Scale 1"=40'

Notes: Check with Village Engineer of Village
of Edina for correct Grade of "CODE Ave"

#5200

I hereby certify that the above is a true and correct plat
of a survey of Lot 11, Block 1, Codes Highview Park, in the
village of Edina, as surveyed by me the 6th day of July 1955.

M. J. Berscheid.

Surveyor.

33-117-21-32-0017

5916 CODE # 102085

5916 7742 CODE