

INDUSTRIAL
BUSINESS
CITY LOTS
TOPOGRAPHIC MAPPING

C. E. COULTER
LAND SURVEYOR

Stanley Orazem
5213 Windsor
14,000.00

PLATTING
FARM SURVEYS
LAKESHORE
JUDICIAL

REGISTERED UNDER LAWS OF STATE OF MINNESOTA
LICENSED BY ORDINANCE OF CITY OF MINNEAPOLIS
3300 LYNDALE AVE. SO. MINNEAPOLIS 8, MINN.
LOCUST 0370

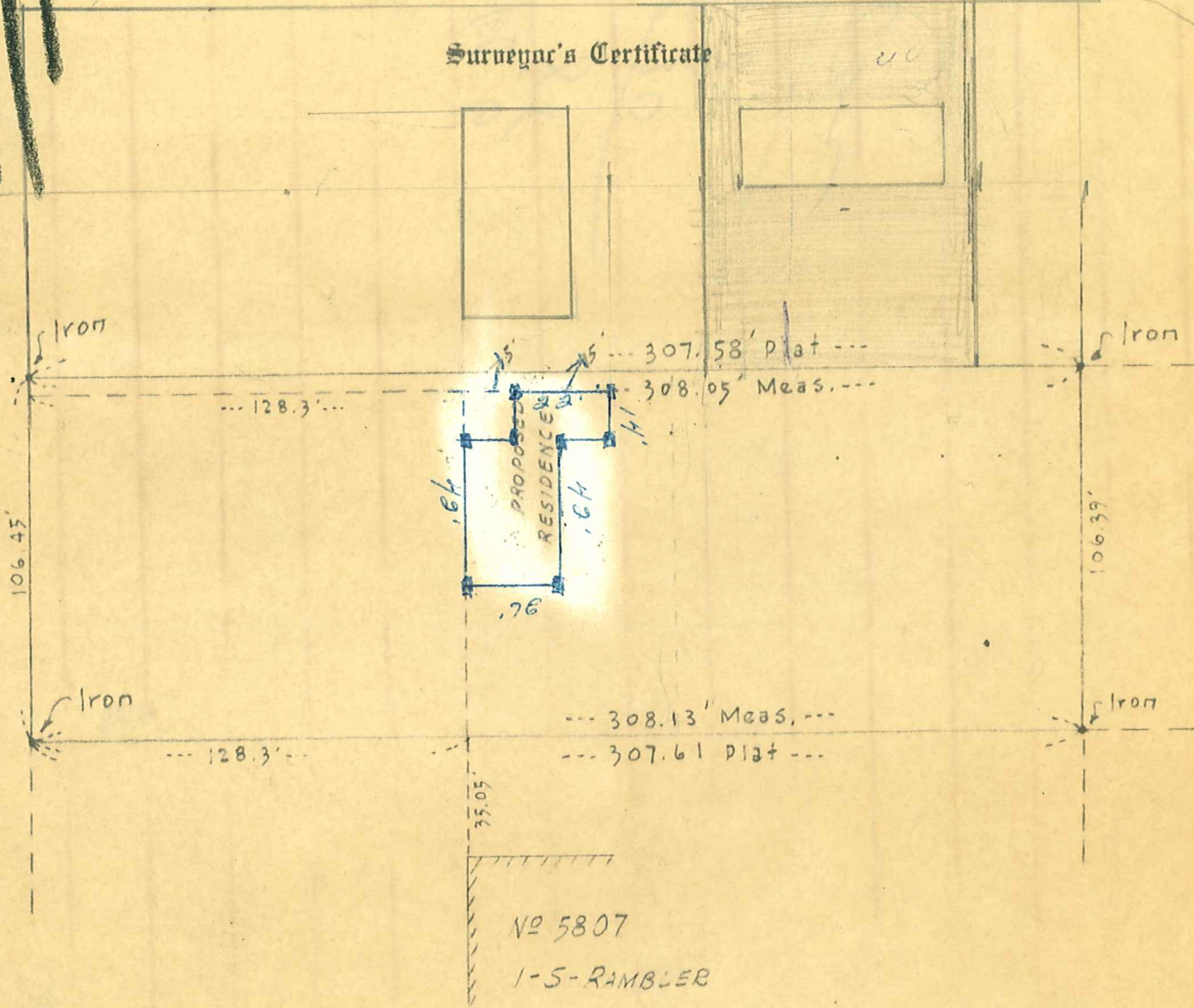
N

SCALE: 1"=50'

5665

5805 BERNARD PLACE
RUSSELL AVE. S.

Surveyor's Certificate



I hereby certify that the above is a true and correct plat of a survey of:

Lot Twenty-Three (23), Block One (1), "Codes Highview Park", Hennepin County, Minnesota.

As surveyed by me this 14th day of October, 1953 A. D.

Signed *C. E. Coulter*
Minnesota Registration No. 2584

2770 S. ORAZEM #138/153

5805 BERNARD PL