

PARK SURVEYORS

Registered Surveyors

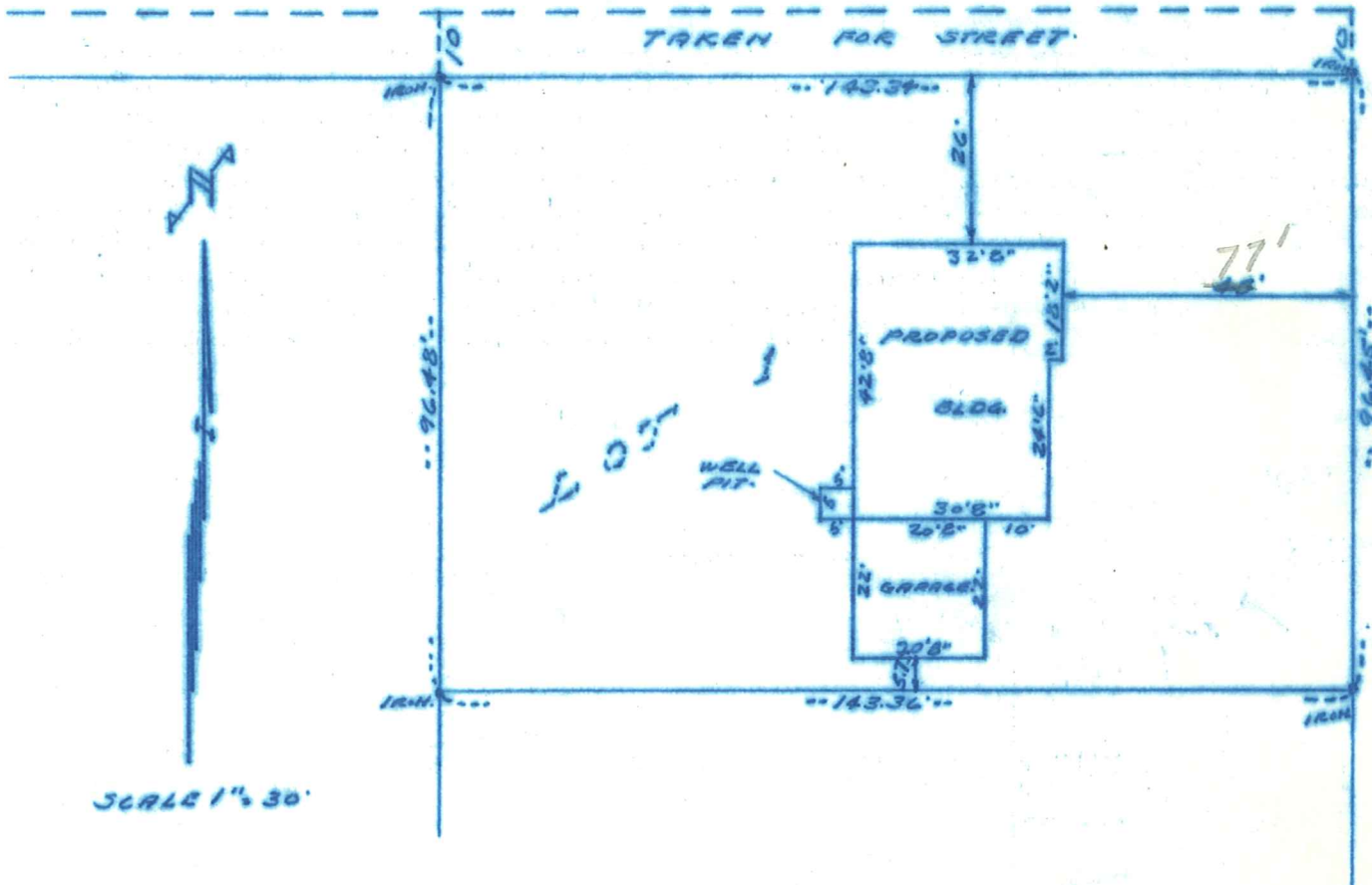
6219 GOODRICH AVENUE
MINNEAPOLIS 16, MINN.

WALNUT 8934

740 MIDLAND BANK BUILDING
MINNEAPOLIS 2, MINNESOTA

Survey For- Nels Lundgren
St. Louis Park, Minnesota

GROVE STREET



I hereby certify that the above is a true and correct plat of a survey of Lot 1, Block 2, Code's Highview Park. Except that taken for Street purposes. As surveyed by me the 23rd day of February 1952.

PARK SURVEYORS

By *[Signature]*

5800
4381