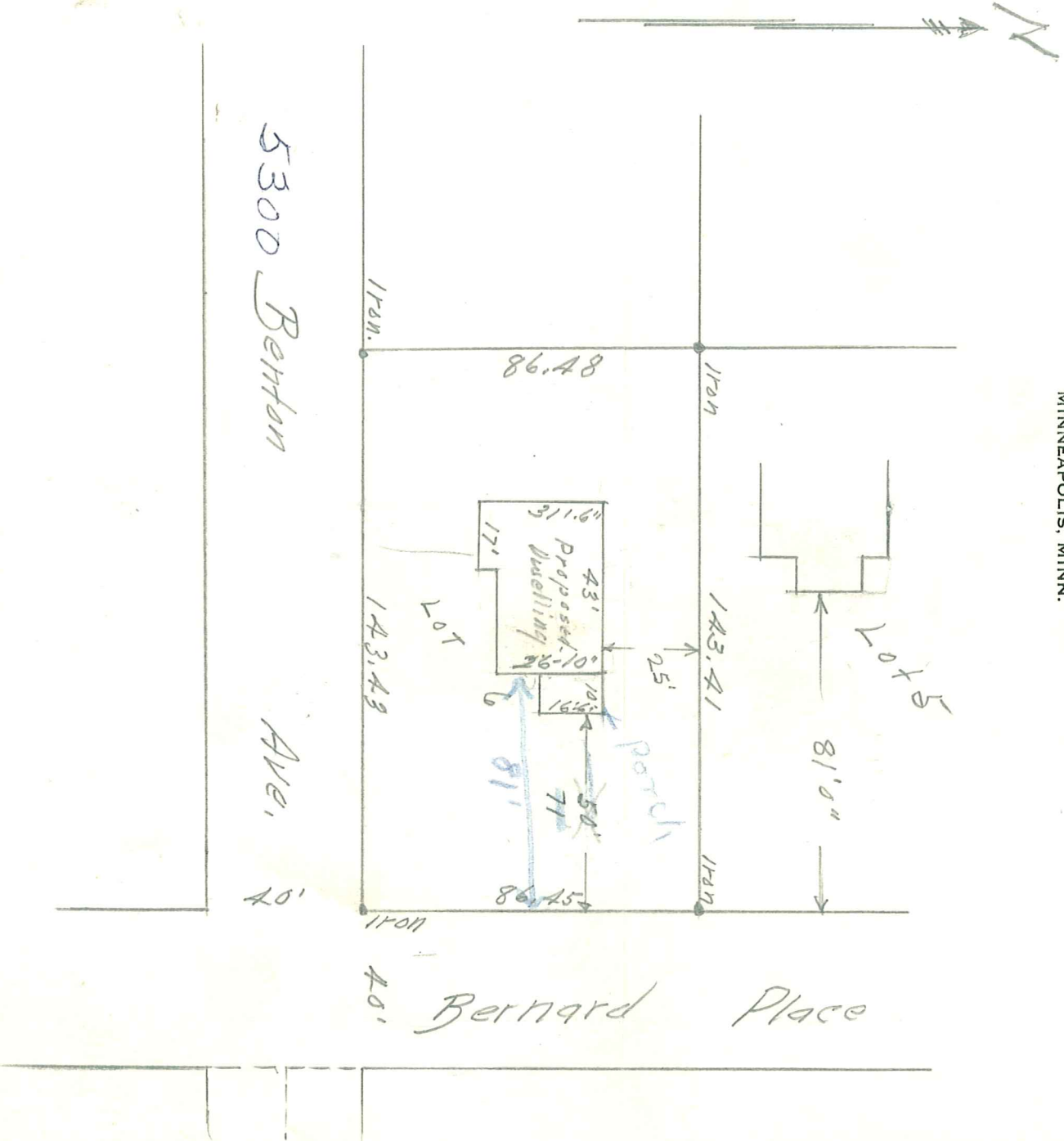


CERTIFICATE OF SURVEY

F. E. MAHONEY
GLADSTONE 2106

JOHN E. CARDARELLE
WALNUT 6105

JOHN E. CARDARELLE & ASSOCIATES
REGISTERED
CIVIL ENGINEERS AND SURVEYORS
MINNEAPOLIS, MINN.



I certify that on this 23 day of Sept, 1946, I surveyed the following real estate

Lot 6, Block 2,
 Coles Highway Park
 Village of Edina

5300 BENTON AVE
 8961

as shown on the above plat.

John E. Cardarelle
 JOHN E. CARDARELLE
 REGISTRATION NO. 566
1968