

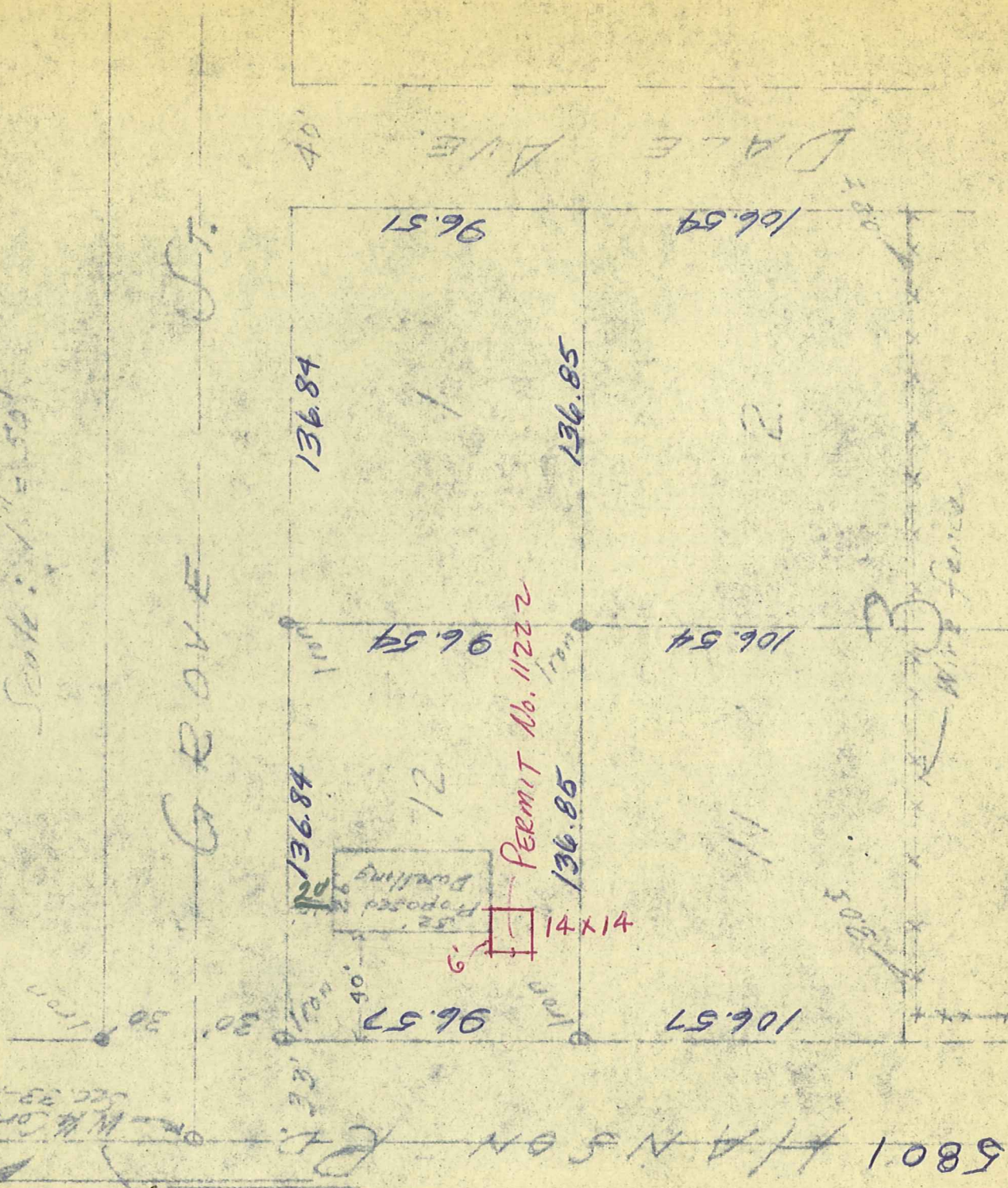
# CERTIFICATE OF SURVEY

F. E. MAHONEY  
GLADSTONE 2106

JOHN E. CARDARELLE  
WALNUT 6105

JOHN E. CARDARELLE & ASSOCIATES  
REGISTERED  
CIVIL ENGINEERS AND SURVEYORS  
MINNEAPOLIS, MINN.

*Scale: 1" = 50'*



This is to certify that on this

10<sup>th</sup>

day of

July

1947, I surveyed the following real estate

Lot 12, Block 3, Codes Highview Park  
Section 33 T.717 - R 31 Hennepin County  
Minnesota

Permit  
2144

as shown on the above plat.

5801 HANSON RD

*John Cardarelle*

JOHN E. CARDARELLE  
REGISTRATION NO. 889

2144