

86-58

M. J. BERSCHIED

Architect and Engineer

PHONE PARKWAY 4-4593

3644 TWENTY-SECOND AVENUE SOUTH

MINNEAPOLIS 7, MINN.

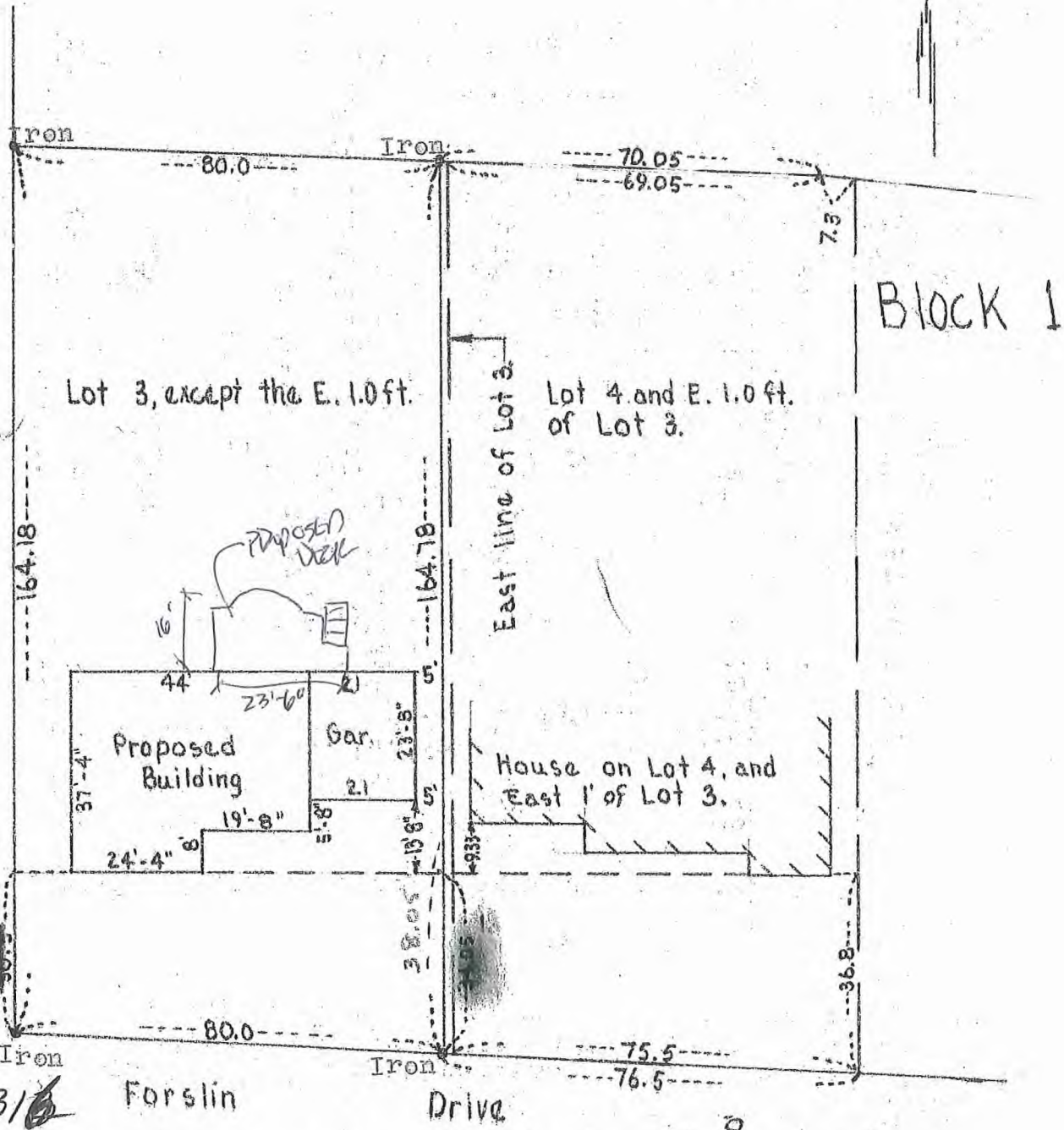
BUILDING DEPARTMENT

NOV 04 2014

CITY OF EDINA

Scale 1" = 30'

8887



I hereby certify that the above is a true and correct plat of a survey of all of Lot 3, except the East 1.0 feet thereof, Block 1, Birchcrest Third Addition, in the village of Edina, Minnesota, as surveyed by me the 22nd day of April, 1958.

M. J. Berscheid.

Land Surveyor.

33.117.31.33.0044

5316 FORSLIN DR

M.J.B. S.