

242-57

M. J. BERSCHIED

Architect and Engineer

PHONE PARKWAY 4-4593

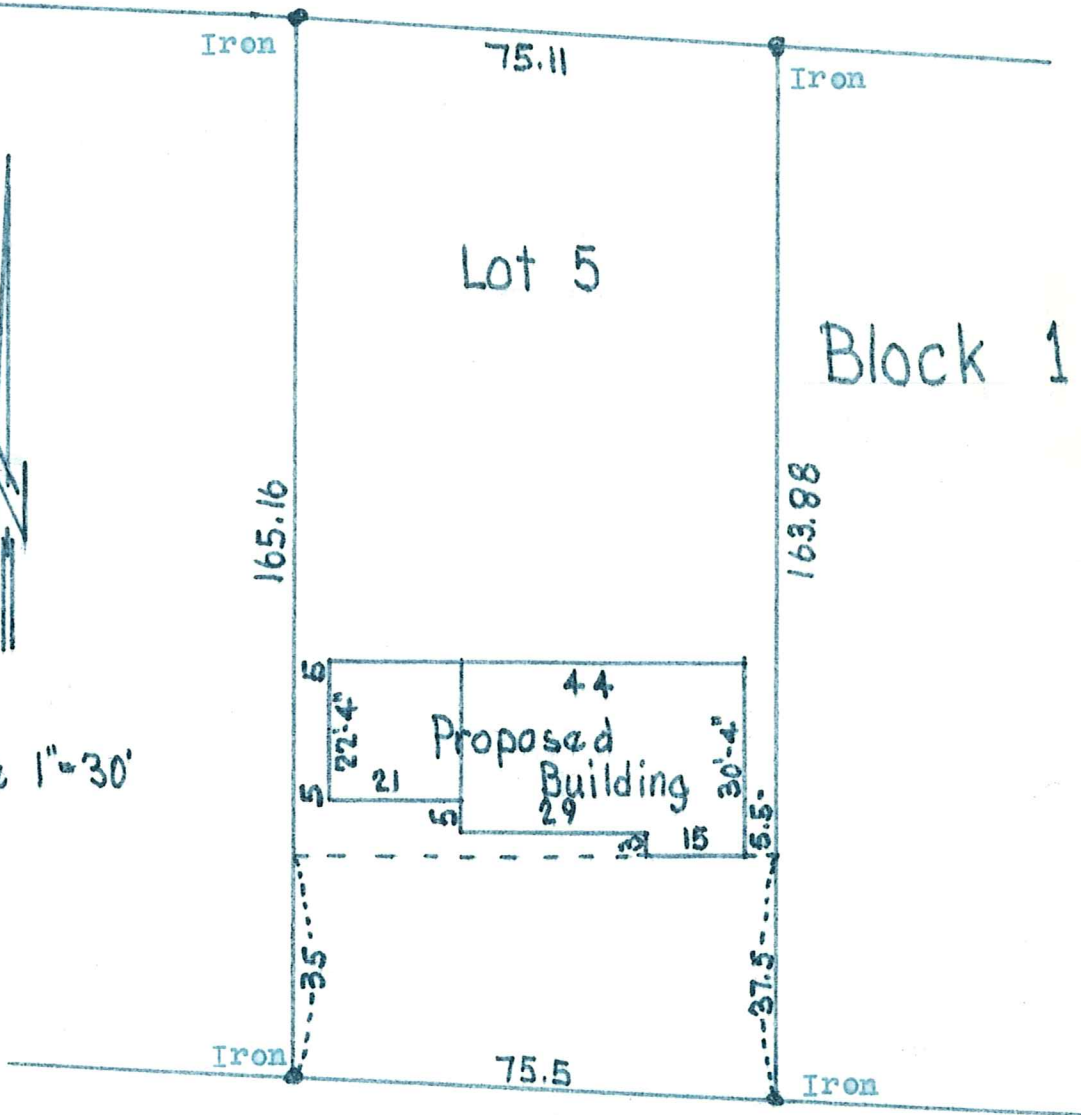
3644 TWENTY-SECOND AVENUE SOUTH

MINNEAPOLIS 7, MINN.

8A70



Scale 1"=30'



5308 Forslin Drive

I hereby certify that the above is a true and correct plat of a survey of Lot 5, Block 1, Birch Crest Third Addition, as surveyed by me the 5th day of September, 1957.

5308 Forslin Drive

M. J. Berscheid.

M. J. B.
Land Surveyor.

5308 FORSLIN DR