

316-55-B.

M. J. BERSCHIED

Architect and Engineer

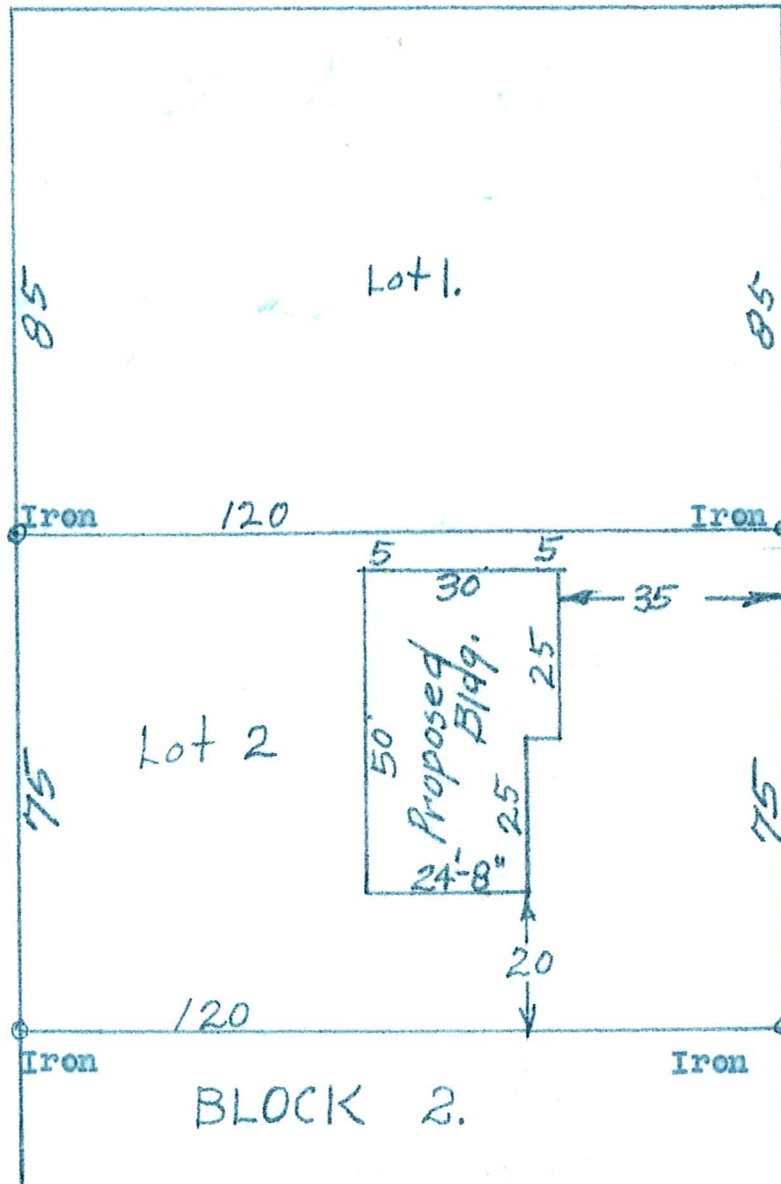
PHONE PARKWAY 4-4593

3644 TWENTY-SECOND AVENUE SOUTH

MINNEAPOLIS 7, MINN.

W. 60th St.

7037
Est. cost
\$7,600.
N



60'

6004 Hanson Road

I hereby certify that the above is a true and correct plat of a survey of Lot 2, Block 2, Birchcrest Third Addition, in the village of Edina Minn., as surveyed by me the 9th. day of September 1955.

M. J. Berscheid.

Surveyor.

33-117.21.33-0049

6004 HANSEN RD