

INDUSTRIAL
BUSINESS
CITY LOTS
TOPOGRAPHIC MAPPING

C. E. COULTER LAND SURVEYOR

PLATTING
FARM SURVEYS
LAKE SHORE
JUDICIAL

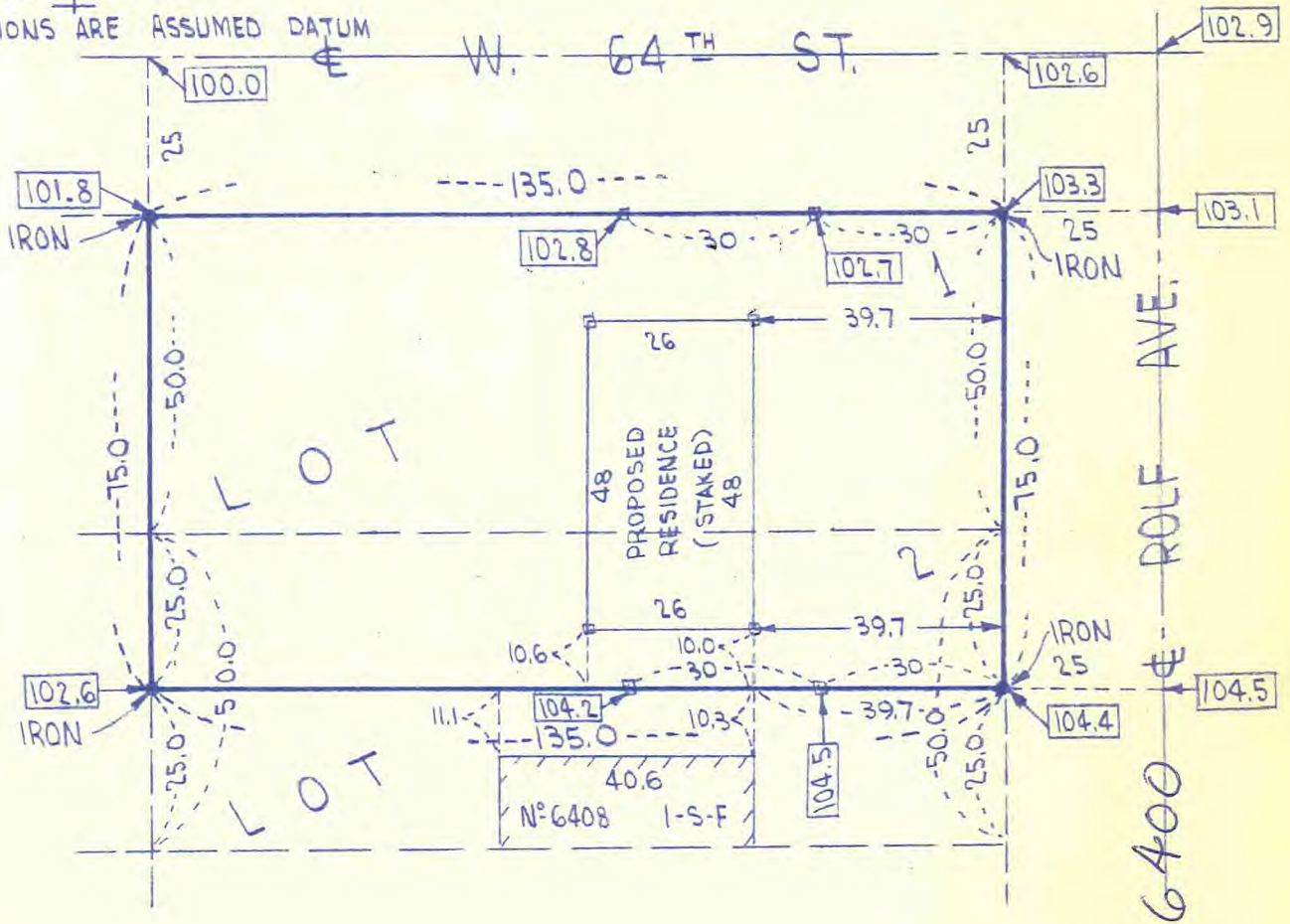
REGISTERED UNDER LAWS OF STATE OF MINNESOTA
LICENSED BY ORDINANCES OF CITY OF MINNEAPOLIS
3300 LYNDALE AVE SO. MINNEAPOLIS 8, MINN.
TAYLOR 4-0370

SURVEY for JUNGELL & JOHNSEN Surveyor's Certificate

SCALE 1" = 30'

ALL ELEVATIONS ARE ASSUMED DATUM

12311



I hereby certify that the above is a true and correct plat of a survey of:

Lot 1 and the North One-Half of Lot 2, Block 10, "Normandale Second Addition", Hennepin County, Minnesota.

As surveyed by me this 24th day of July 1961 A.D.

Signed

C. E. Coulter

Minnesota Registration No. 2584

TOP OF FOUNDATION ELEV 105.8'

04.116.21.23.0021
6400 Rolf Ave.