

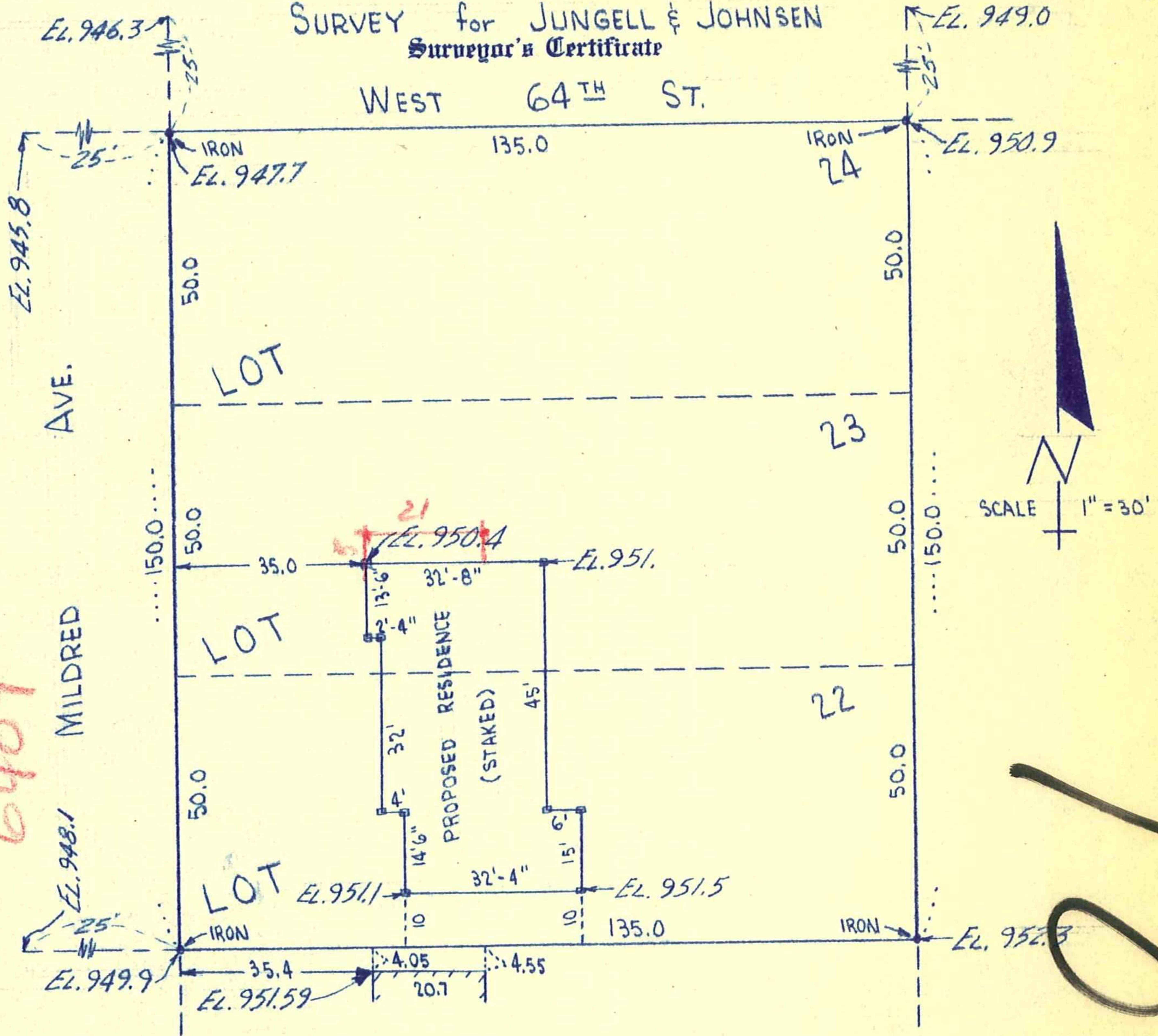
INDUSTRIAL
BUSINESS
CITY LOTS
TOPOGRAPHIC MAPPING

C. E. COULTER
LAND SURVEYOR

PLATTING
FARM SURVEYS
LAKESHORE
JUDICIAL

REGISTERED UNDER LAWS OF STATE OF MINNESOTA
LICENSED BY ORDINANCE OF CITY OF MINNEAPOLIS
3300 LYNDALE AVE. SO. MINNEAPOLIS 8, MINN.
TAYLOR 4-0370

SURVEY for JUNGELL & JOHNSEN
Surveyor's Certificate



I hereby certify that the above is a true and correct plat of a survey of
Lots 22, 23 and 24, Block 10, "Normandale Second Addition", Hennepin County,
Minnesota. Subject to easements of record if any.

As surveyed by me this 6th day of January 1961 A.D.

Signed C. E. Coulter
Minnesota Registration No. 2584

6409 Mildred Ave 04-116-21-23-0034