

116-58

M. J. BERSCHIED

Architect and Engineer

PHONE PARKWAY 4-4593

3644 TWENTY-SECOND AVENUE SOUTH

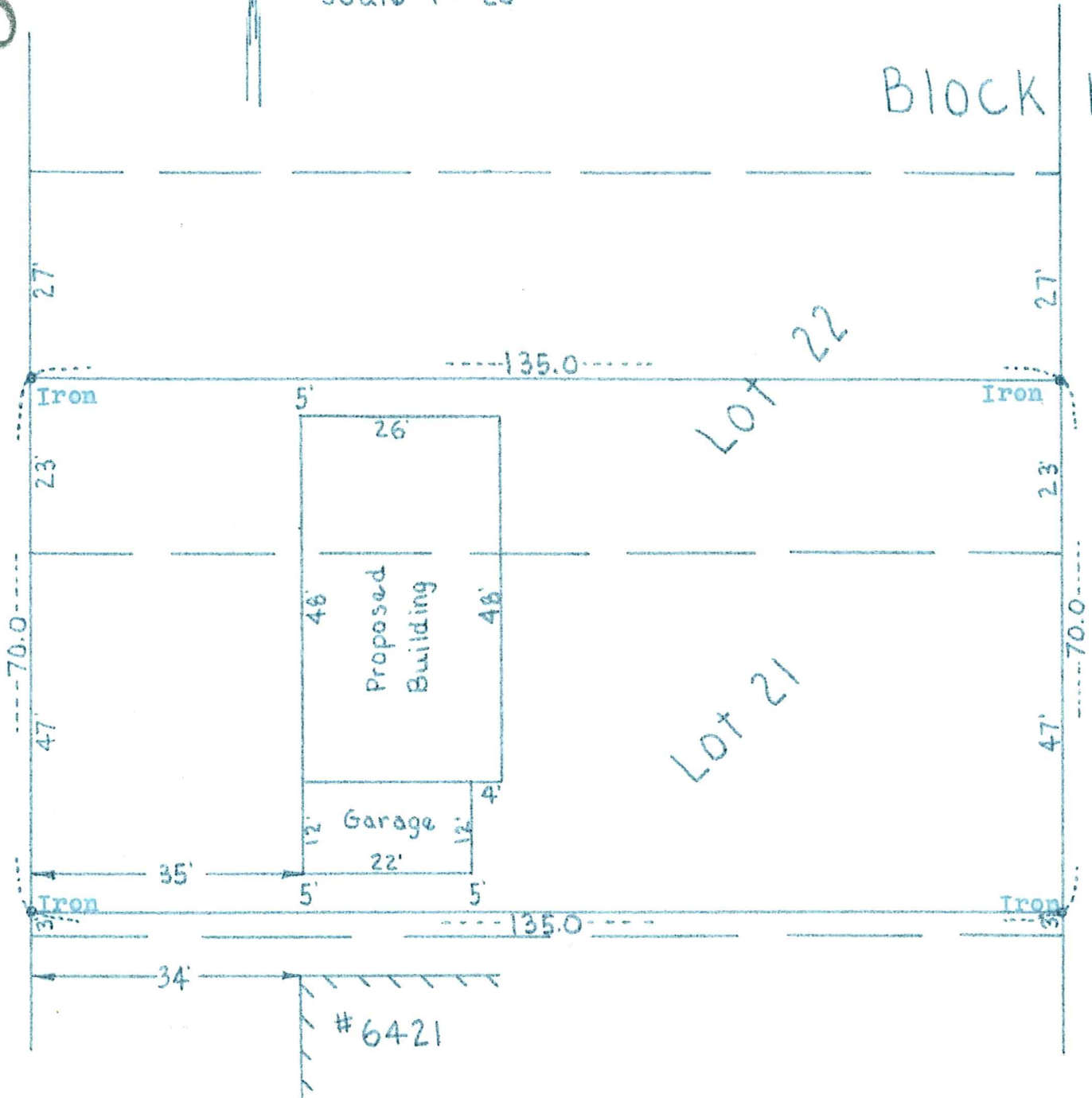
MINNEAPOLIS 7, MINN.

Scale 1" = 20'

8943

6411 Tingdale Avenue

Block 12



I hereby certify that the above is a true and correct plat of a survey of the the North 47.0 feet of Lot 21, and the South 23.0 feet of Lot 22, Block 12, Normandale Second Addition, as surveyed by me the 13th day of May, 1958.

M. J. Berscheid.

M.J.B.

Land Surveyor.

6411 TINGDALE AVE