

12032

# Surveyor's Certificate

Survey for Tom Wakely

HARRY S. JOHNSON

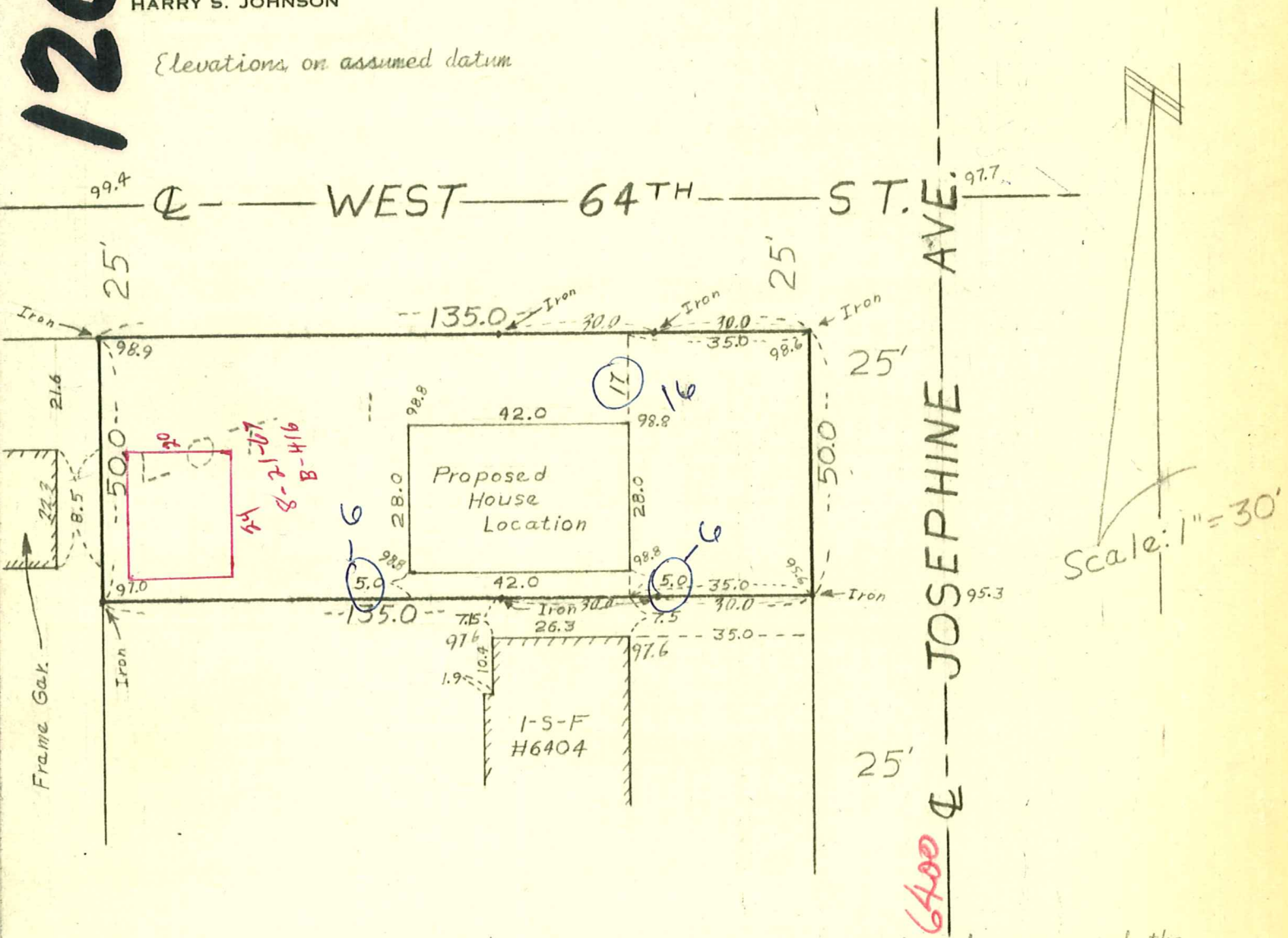
Elevations on assumed datum



LAND SURVEYORS

## Harry S. Johnson Associates

10621 FRANCE AVE. SOUTH  
MINNEAPOLIS 20, MINNESOTA  
TUXEDO 8-2100



I hereby certify that this is a true and correct representation of a survey of the boundaries of Lot 1, Block 13, NORMANDALE SECOND ADDITION, Hennepin County, Minnesota and of the location of all buildings, thereon, and all visible encroachments, if any, from or on said land. As surveyed by me this 18th day of October 1962.

8/21/67  
04-116-21-24-0048  
6400 Josephine Ave.

*Harry S. Johnson*  
Harry S. Johnson, Minn. Reg. No. 5065