

12068
12021

Surveyor's Certificate

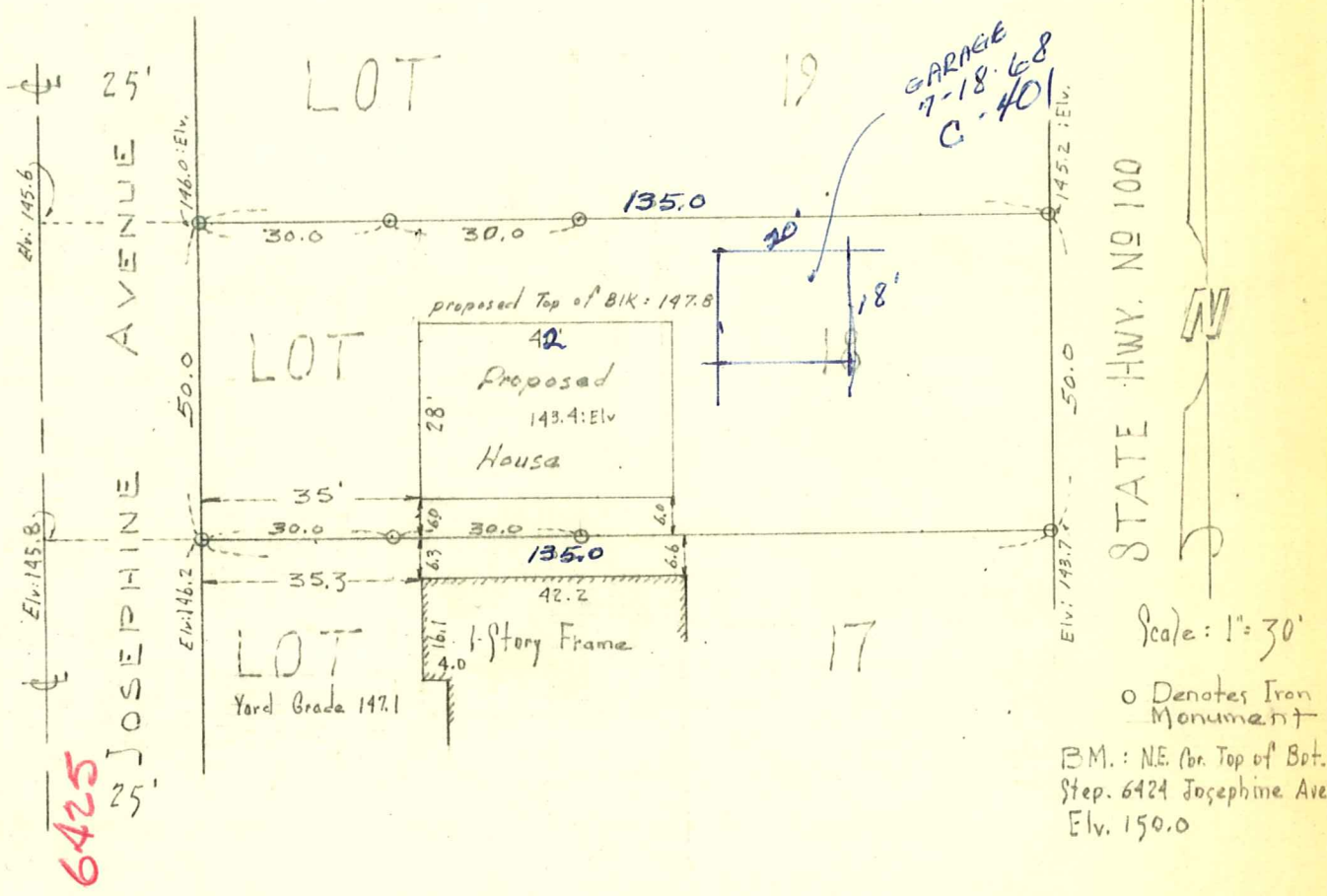
HARRY S. JOHNSON



LAND SURVEYORS

Harry S. Johnson Associates

10636 FRANCE AVE. SOUTH
MINNEAPOLIS 20, MINNESOTA
TUXEDO 8-2100



I hereby certify that this is a true and correct representation of a survey of the boundaries of Lot 18, Block 14, Normandale Second Addition, and of the location of all buildings thereon, and all visible encroachments, if any, from or on said land. As surveyed by me, this 26th day of October 1962.

Harry S. Johnson
 Harry S. Johnson, Land Surveyor, Minn. Reg. 5065

04-116-24-24-0054
 6425 Josephine Ave.