

12/28  
6421

# Surveyor's Certificate

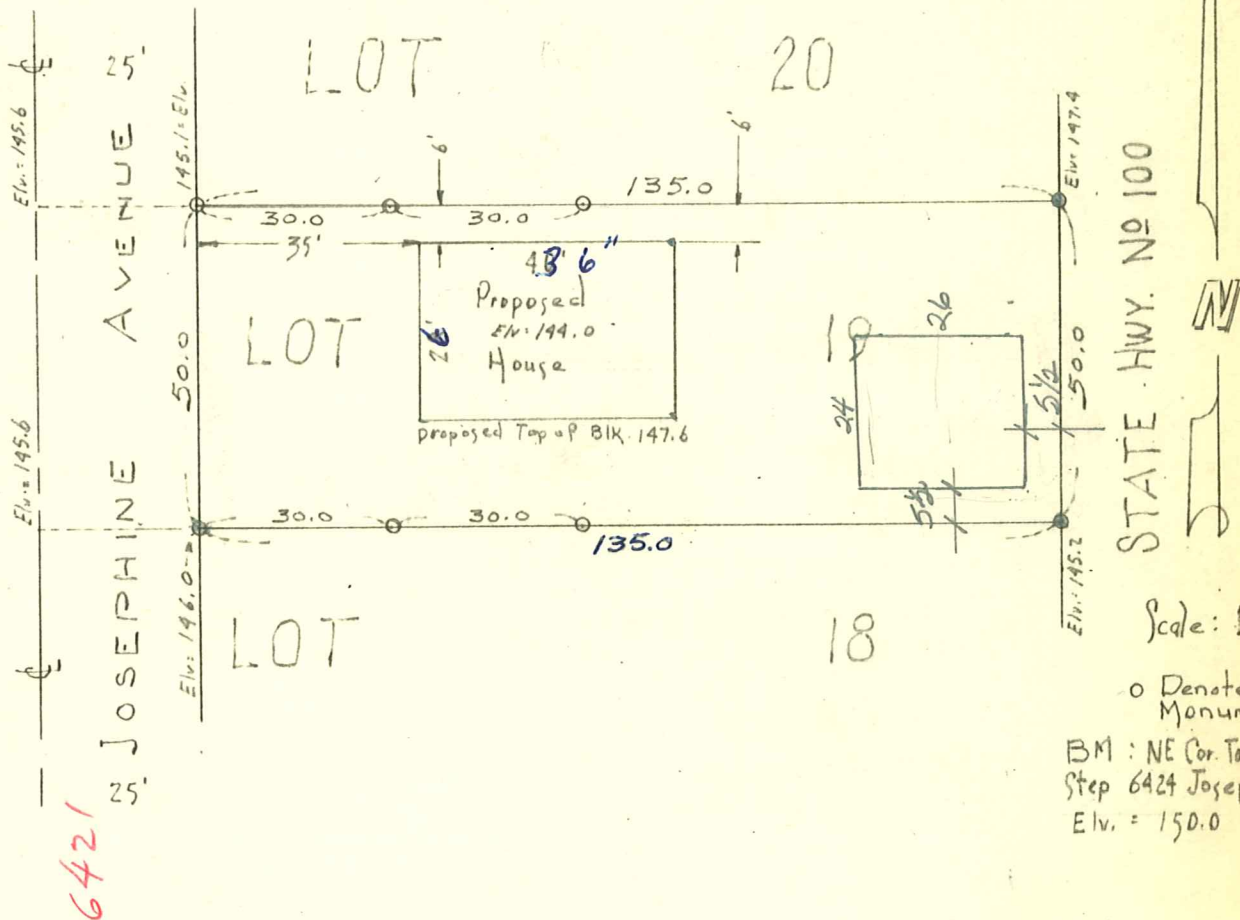
HARRY S. JOHNSON



LAND SURVEYORS

## Harry S. Johnson Associates

10636 FRANCE AVE. SOUTH  
MINNEAPOLIS 20, MINNESOTA  
TUXEDO 8-2100



I hereby certify that this is a true and correct representation of a survey of the boundaries of Lot 19, Block 14, Normandale Second Addition, and of the location of all buildings thereon, and all visible encroachments, from or on said land. As surveyed by me this 26th day of October 1962.

*Harry S. Johnson*  
 Harry S. Johnson, Land Surveyor, Minn. Reg. 5065

04-116-21-24-0055  
 6421 Josephine Ave.