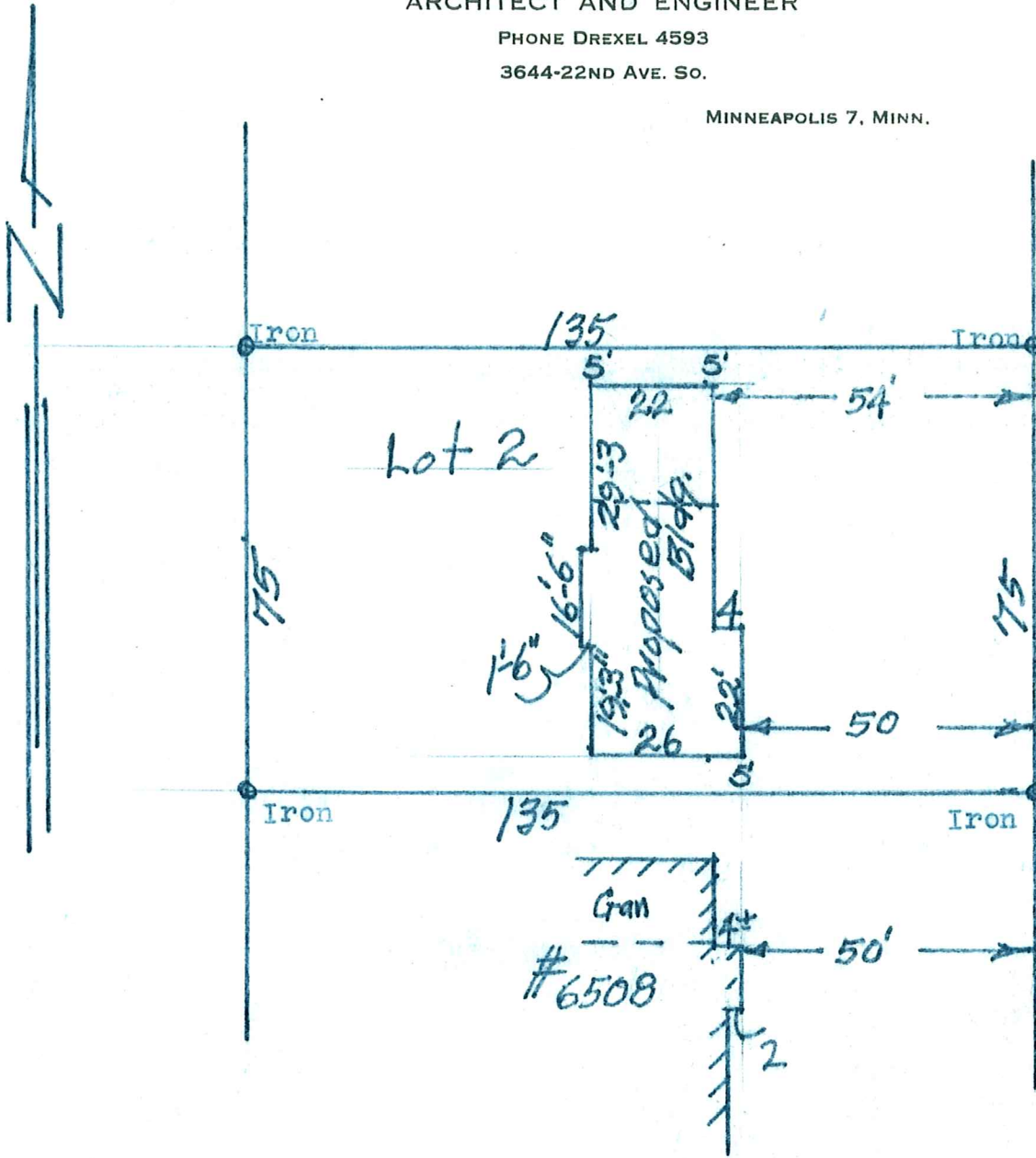


293-54

M. J. BERSCHIED
ARCHITECT AND ENGINEER
PHONE DREXEL 4593
3644-22ND AVE. SO.

MINNEAPOLIS 7, MINN.

6160



6504 Josephine Ave. 50'

I hereby certify that the above is a true and correct plat of a survey of Lot 2, Orrin Thompson's Edina Addition, in the village of Edina, Minnesota, as surveyed by me the 7th day of September, 1954.

Harold Swanson Bldr.
5829 Kellogg Ave.
Cost \$ 16,500

M. J. Berscheid.

Surveyor.

04-116-21-24-0086
6504 Josephine Ave.