

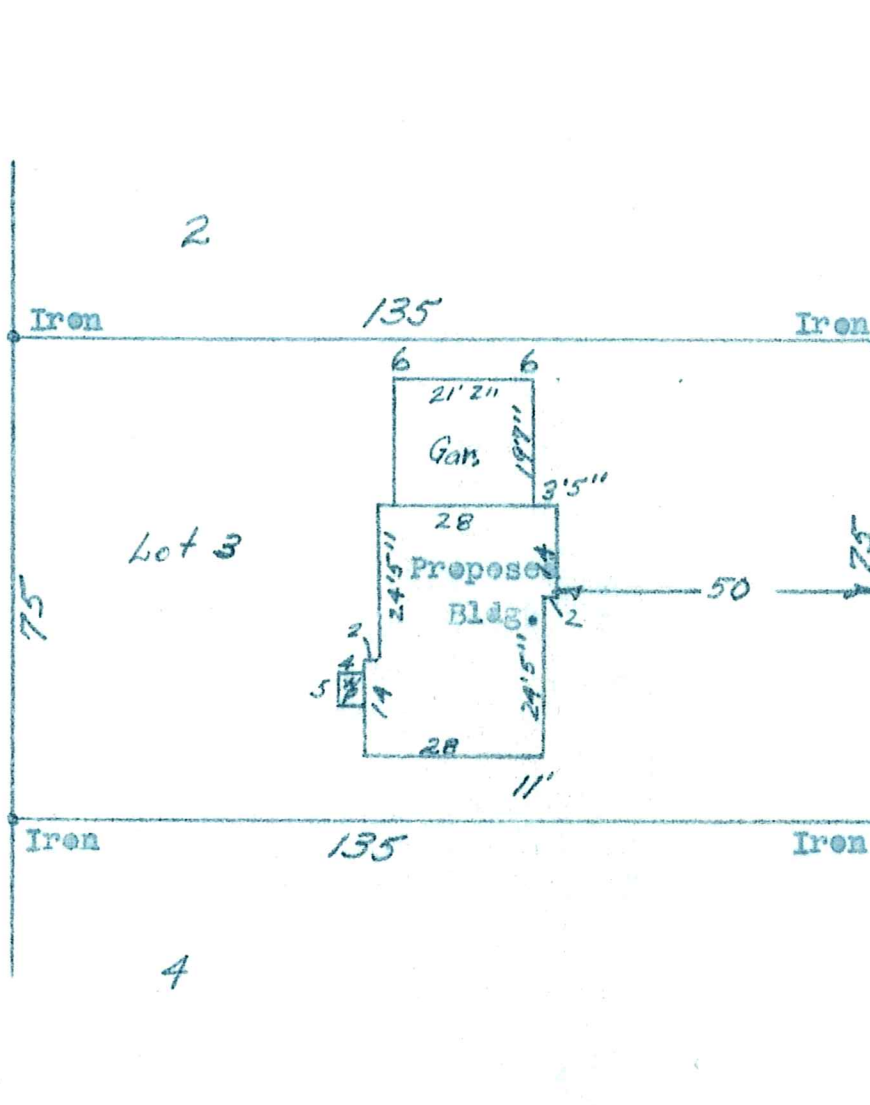
403-51-C

M. J. BERSCHIED  
ARCHITECT AND ENGINEER

PHONE DREXEL 4593  
3644-22ND AVE. SO.

MINNEAPOLIS 7, MINN.,

4276



50'

Ave

PLAN "C"

6508 Josephine

I hereby certify that the above is a true and correct plat of a survey of Lot 3, Orrin Thompson's Edina Terrace, Addition in the village of Edina, as surveyed by me the 15th. day of October 1951.

04-116-21-24-0087  
6508 Josephine Ave.

M. J. Berscheid. M. J. B.  
Surveyor.