

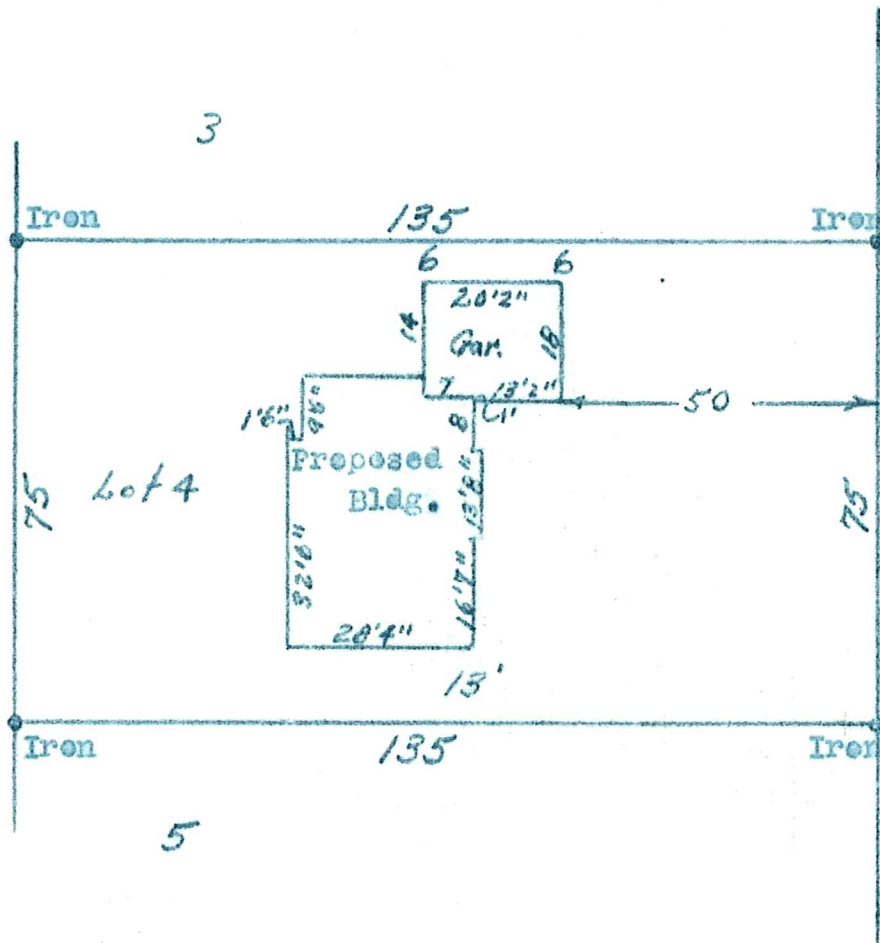
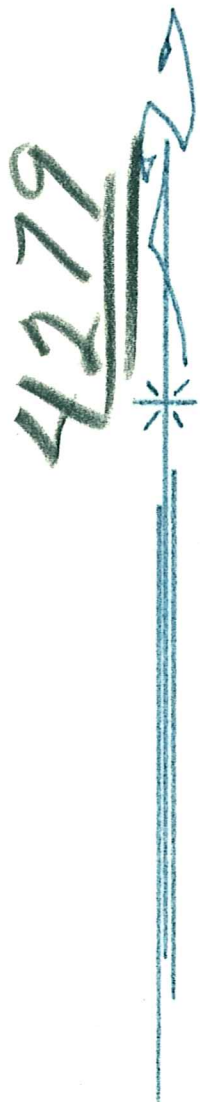
403-51-D

M. J. BERSCHIED
ARCHITECT AND ENGINEER

PHONE DREXEL 4593

3644-22ND AVE. SO.

MINNEAPOLIS 7, MINN.,



I hereby certify that the above is a true and correct plat of a survey of Lot 4, Orrin E. Thompson's Edina Terrace, in the village of Edina, as surveyed by me the 15th. day of October 1951.

M. J. Berscheid. *M.J.B.*
Surveyor.

04-116-21-24-0088
6512 Josephine Ave.