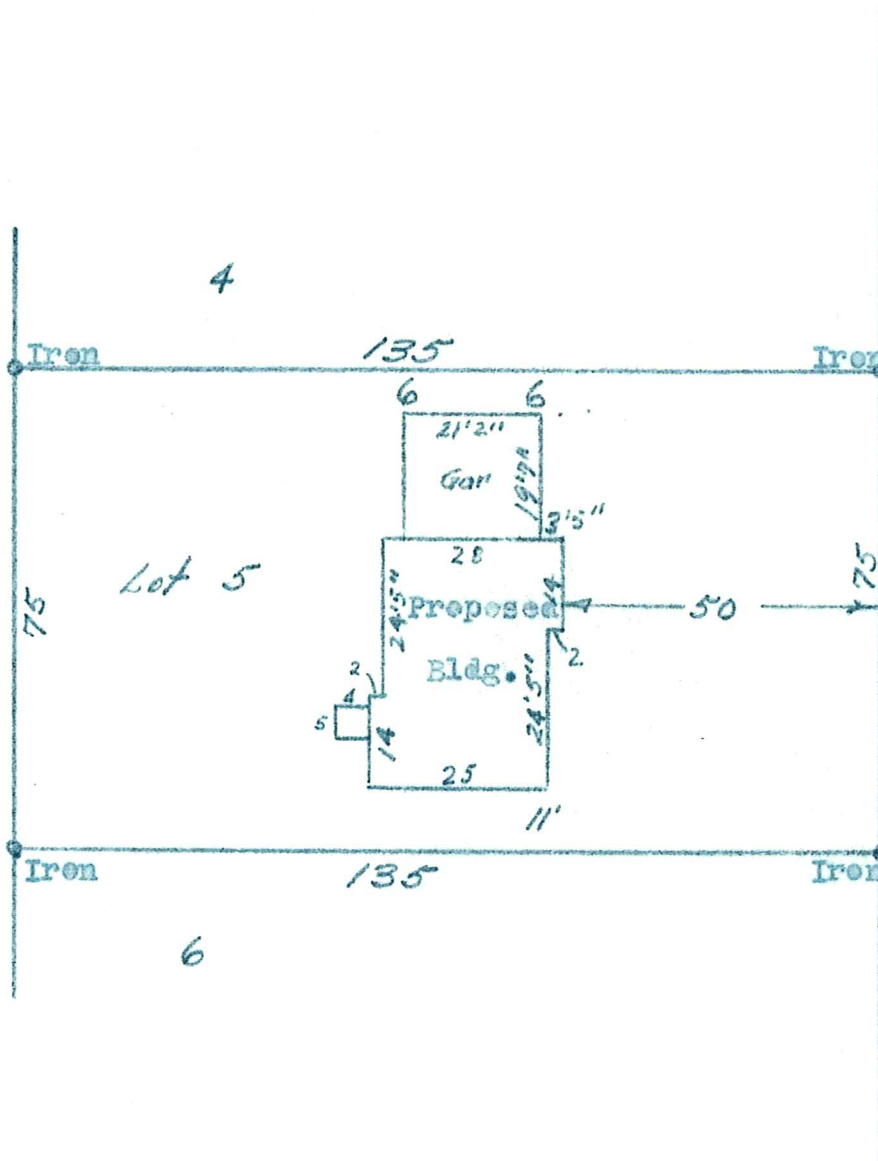
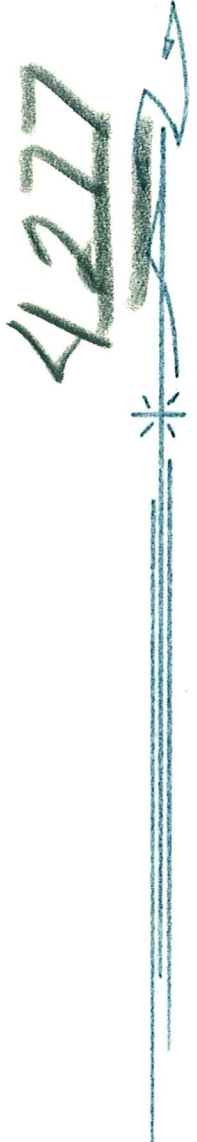


403-51-E

M. J. BERSCHIED  
ARCHITECT AND ENGINEER

PHONE DREXEL 4593  
3644-22ND AVE. SO.

MINNEAPOLIS 7, MINN..



I hereby certify that the above is a true and correct plat of a survey of Lot 5, Orrin E. Thompson's Edina Terrace Addition in the village of Edina, as surveyed by me the 15th. day of October 1951.

M. J. Berscheid. *MJB*  
Surveyor.

04-116-21-24-0089  
6516 Josephine Ave.