

9783

92-59  
M. J. BERSCHIED

Architect and Engineer

PHONE PARKWAY 4-4593

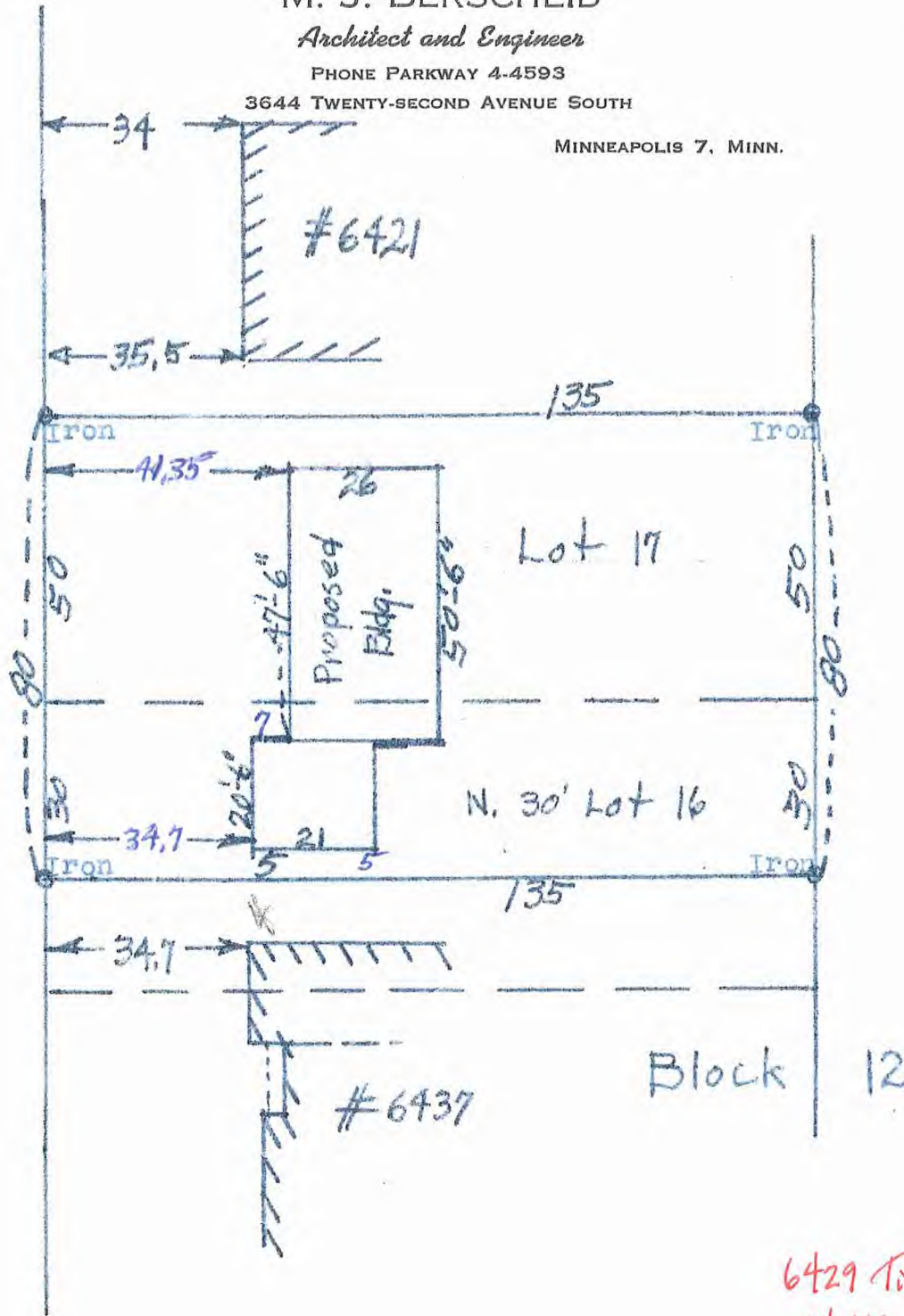
3644 TWENTY-SECOND AVENUE SOUTH

MINNEAPOLIS 7, MINN.

50

Ave.

Tingdale



6429 Tingdale Ave.  
04.116-21.24.0042

I hereby certify that the above is a true and correct plat of a survey of Lot 17 and the North 30.0 feet of Lot 16, Block 12, Normandale Second Addition, in the village of Edina, Minn., as surveyed by me the 13th day of May, 1959.

M. J. Berscheid.

M.J.B.  
Land Surveyor.