

8944

115-58
M. J. BERSCHIED

Architect and Engineer

PHONE PARKWAY 4-4593

3644 TWENTY-SECOND AVENUE SOUTH

MINNEAPOLIS 7, MINN.

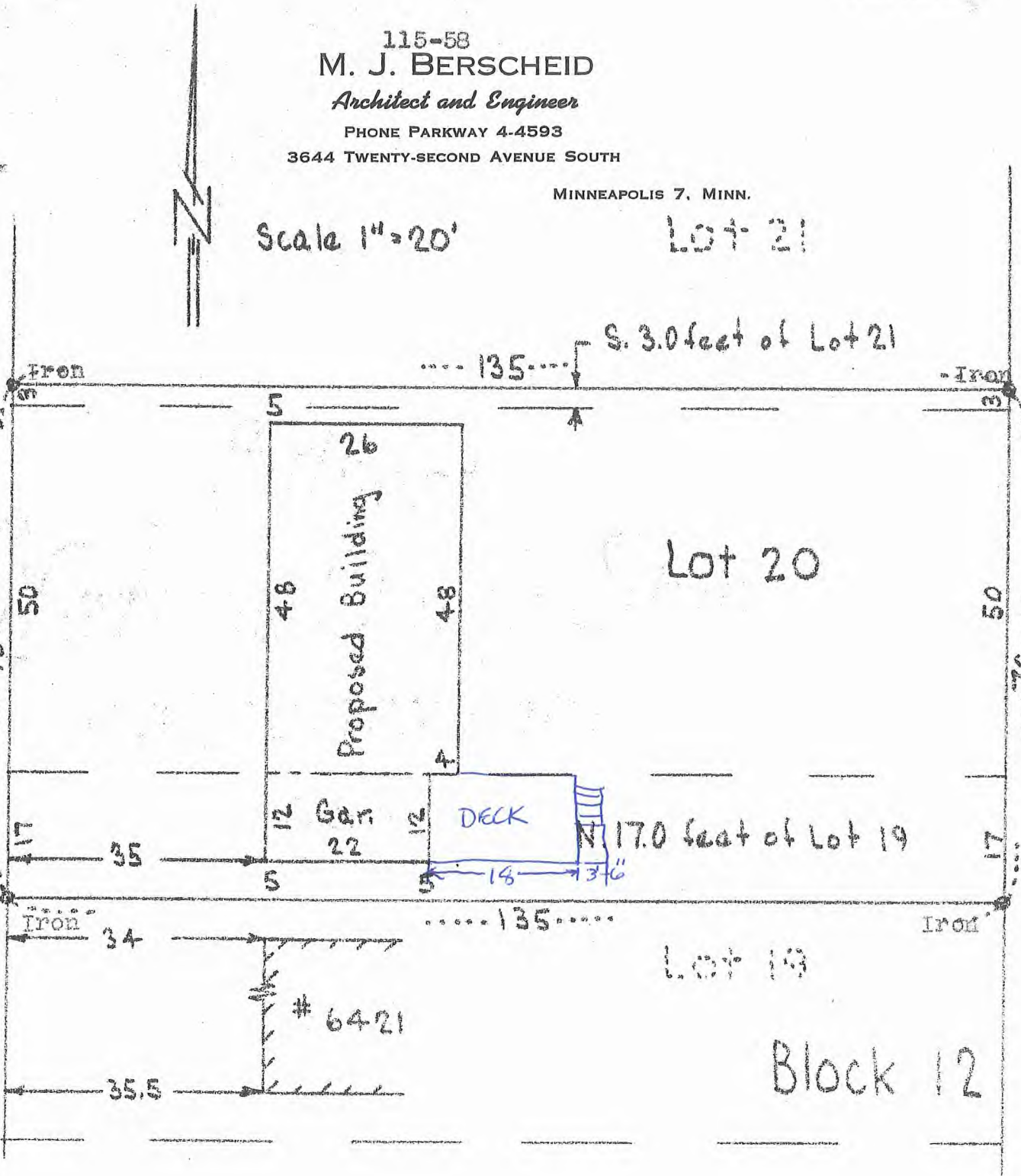
Scale 1"=20'

Lot 21

S.

Avenue

6417 Tingdale



I hereby certify that the above is a true and correct plat of a survey of the North 17.0 feet of Lot 19, and all of Lot 20, and the South 3.0 feet of Lot 21, Block 12, Normandale Second Addition, as surveyed by me the 13th day of May, 1958.

M. J. Berscheid.

M. J. B.
Land Surveyor.

6417 Tingdale Ave.

04.116.21.24.0044