

223-58

M. J. BERSCHIED

Architect and Engineer

PHONE PARKWAY 4-4593

3644 TWENTY-SECOND AVENUE SOUTH

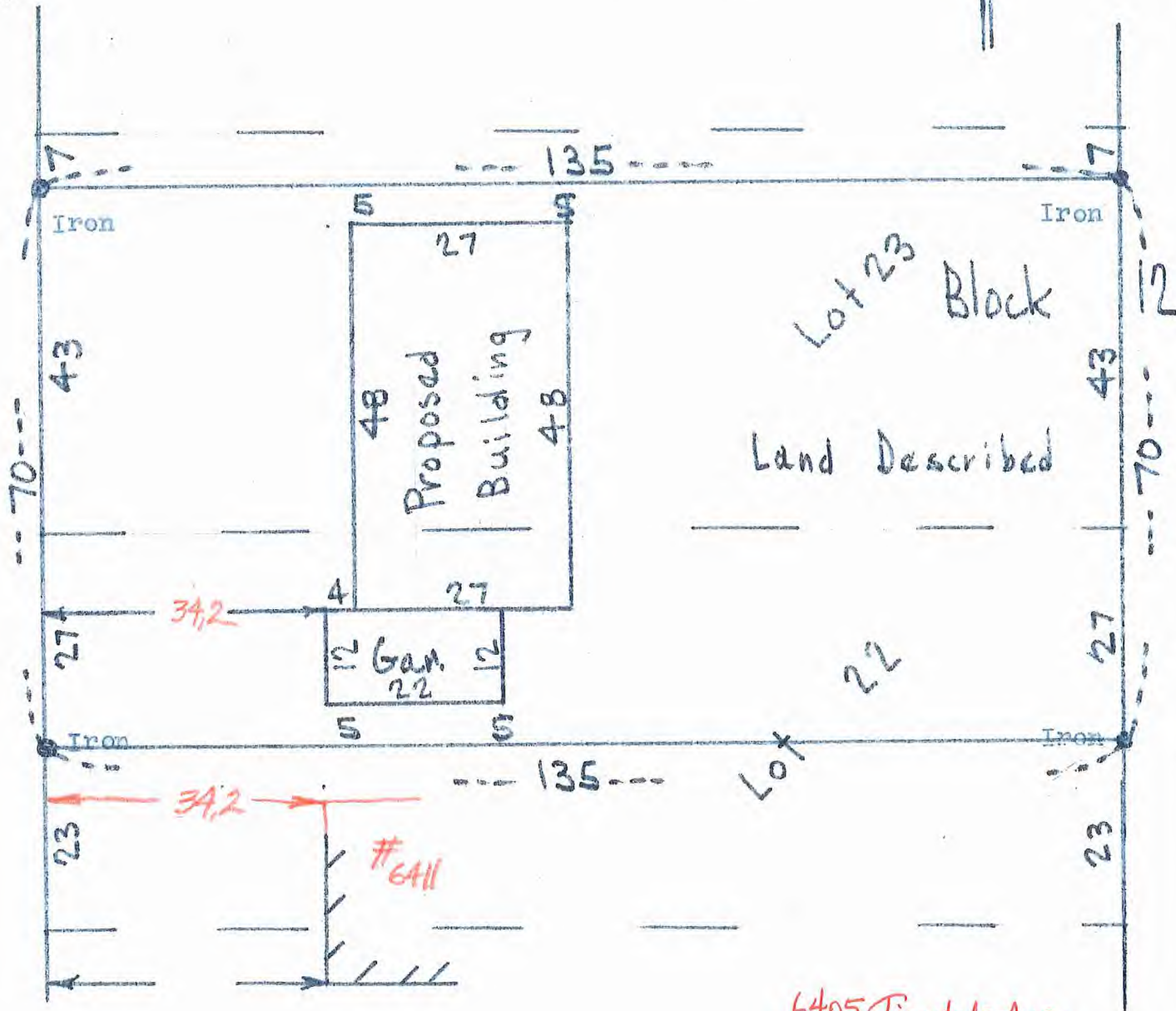
MINNEAPOLIS 7, MINN.

Scale 1"=20'



9153

6405 Tingdale Avenue S.



6405 Tingdale Ave.
04.116.21.24.0046

I hereby certify that the above is a true and correct plat of a survey of the North 27.0 feet of Lot 22, and all of Lot 23, except the North 7.0 feet thereof, Block 12, Normandale Second Addition, as surveyed by me the 12th day of August, 1958.

M. J. Berscheid. *M. J. B.*
Land Surveyor.