

348-58

M. J. BERSCHIED

Architect and Engineer

PHONE PARKWAY 4-4593

3644 TWENTY-SECOND AVENUE SOUTH

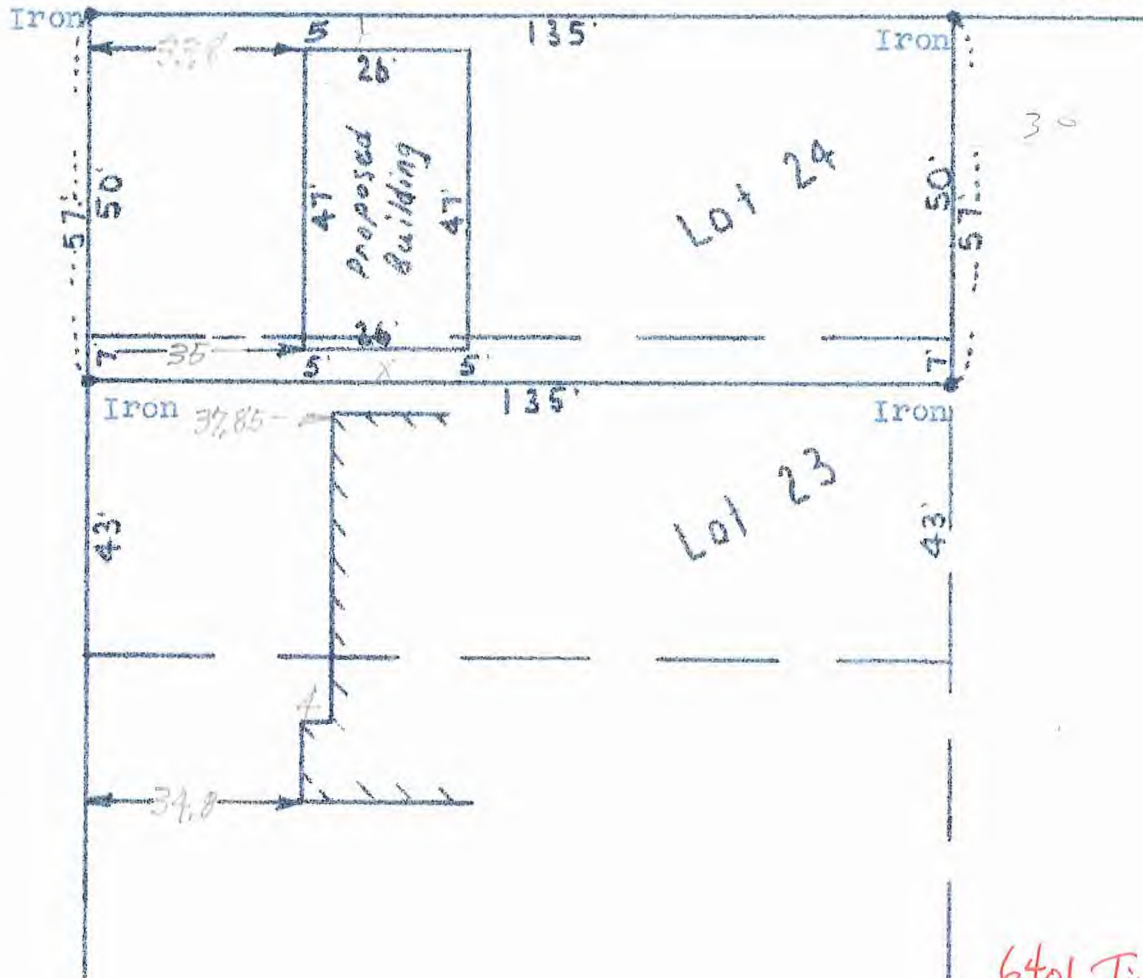
MINNEAPOLIS 7, MINN.

9492

West 64th Street

Scale 1" = 20'

6401 Tingdale Avenue



6401 Tingdale Ave.
04.116.21.24.0047

I hereby certify that the above is a true and correct plat of a survey of Lot 24, and the North 7.0 feet of Lot 23, Block 12, Normandale Second Addition, in the village of Edina, inn., as surveyed by me the 23rd day of December, 1958.

M. J. Berschied.

MJB

Land Surveyor