

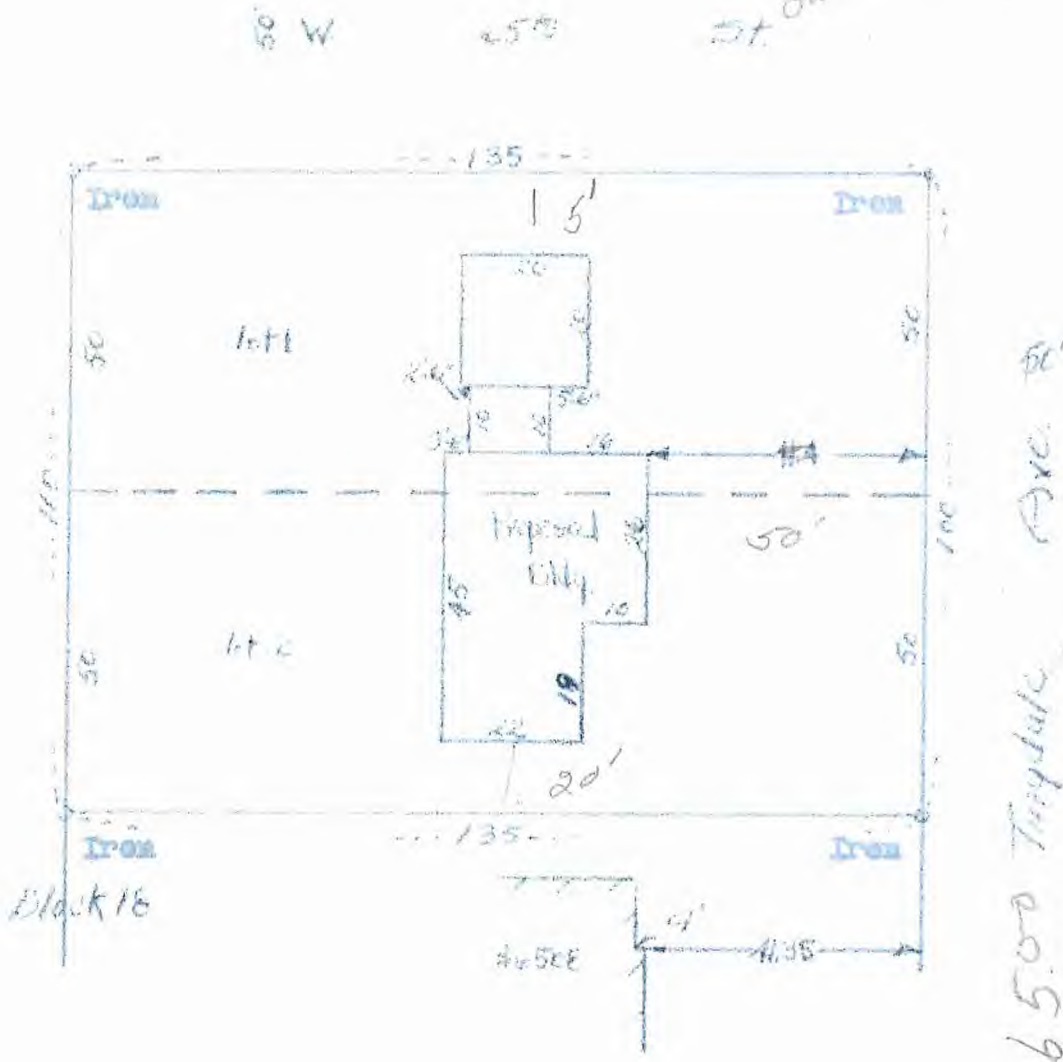
4667

274-52  
**M. J. BERSCHIED**  
ARCHITECT AND ENGINEER

PHONE DREXEL 4593  
3644-22ND AVE. SO.

MINNEAPOLIS 7, MINN.

cont. *Bird Bakken*  
St. owner *Edward Bove*  
\$14,000



I hereby certify that the above is a true and correct plat of a survey of Lots 1 and 2, Block 18, Hermadale Second Addition, in the village of Edina, Minnesota, as surveyed by me the 21st day of July, 1952.

M. J. Berschied. *M.J.B.*  
Surveyor.

6500 Tingdale Ave.  
04.116.21.24.0078